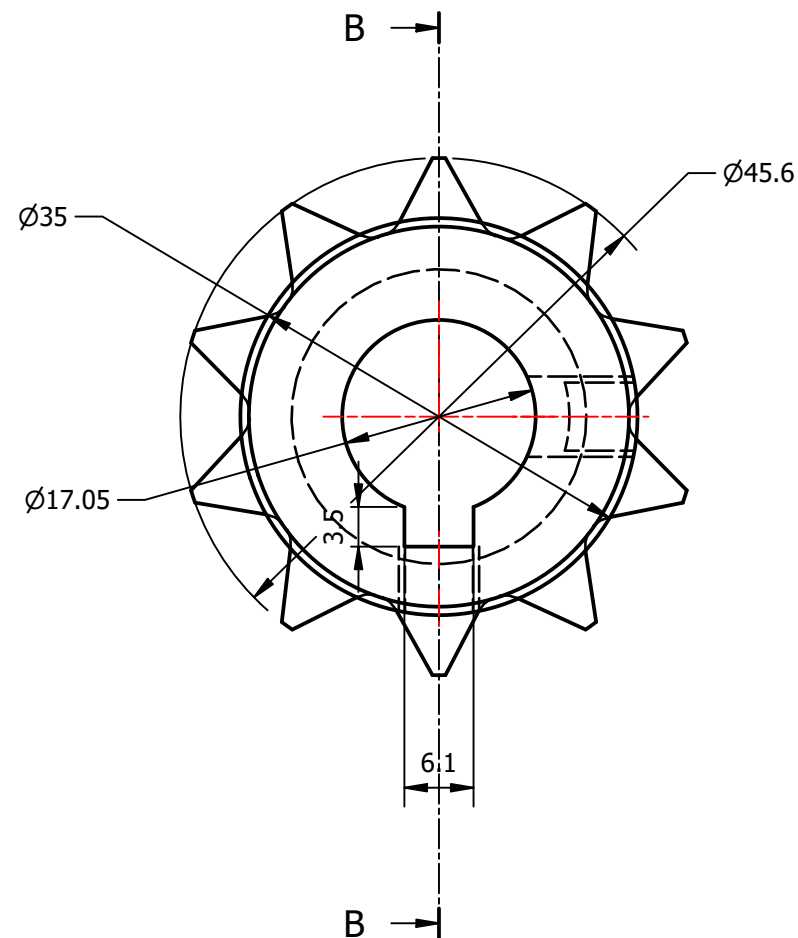
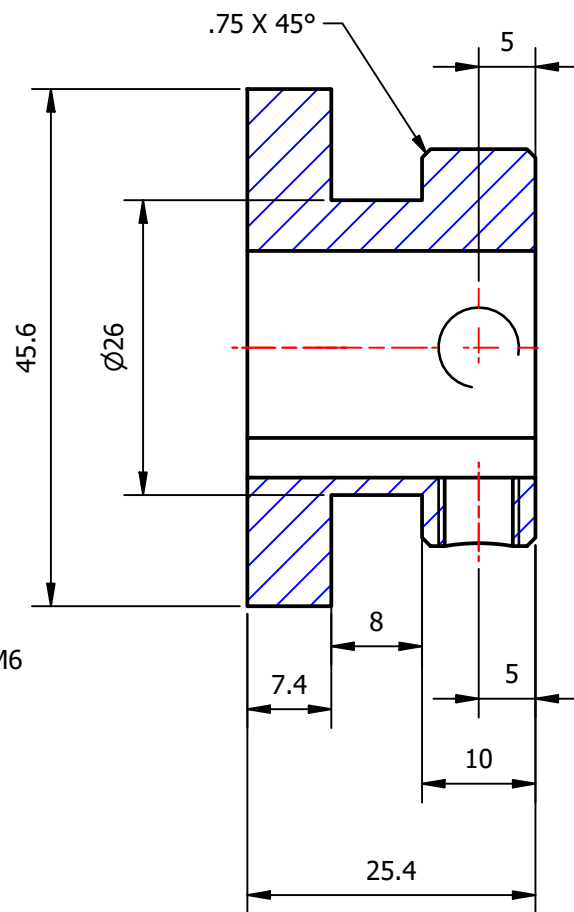


DRILLED AND TAPPED TO M6



NOTES ON COPYRIGHTS:
THIS DRAWING IS THE PROPERTY OF TAEGE ENGINEERING LTD. YOU HEREBY AGREE AND UNDERTAKE THAT YOU WILL NOT IN ANY WAY UTILISE, COPY, REPRODUCE OR TAKE ADVANTAGE OF THE DRAWING (OR ANY PART OF THEM) PRIOR TO OUR WRITTEN CONSENT. SHOULD ANY CONTRAVENTION OCCUR, THE ONUS SHALL BE ON YOU TO PROVE THAT YOU HAVE NOT BEEN IN BREACH.

REVISION HISTORY

REV	DESCRIPTION	DATE	APPROVED	ECN#
1	INITIAL BASE	11-MAY-2018		



DO NOT SCALE DRAWING
DIMENSIONS ARE IN MILLIMETERS
X = ±0.5mm, ±1.0°
0.X = ±0.2mm, ±0.5°
0.0X = ±0.1mm, ±0.2°
UNLESS OTHERWISE SPECIFIED

DRAWN :	
DATE:	17/08/2012
APPROVED BY:	
SCALE:	
TAEGE ENGINEERING DESIGN DEPARTMENT	

TITLE:
10 Tooth Sprocket

MATERIAL:
MILD STEEL

FINISH:
ZINC

PART NUMBER:
DD_B_79

REVISION NUMBER:

SHEET: 1 OF 1

A4