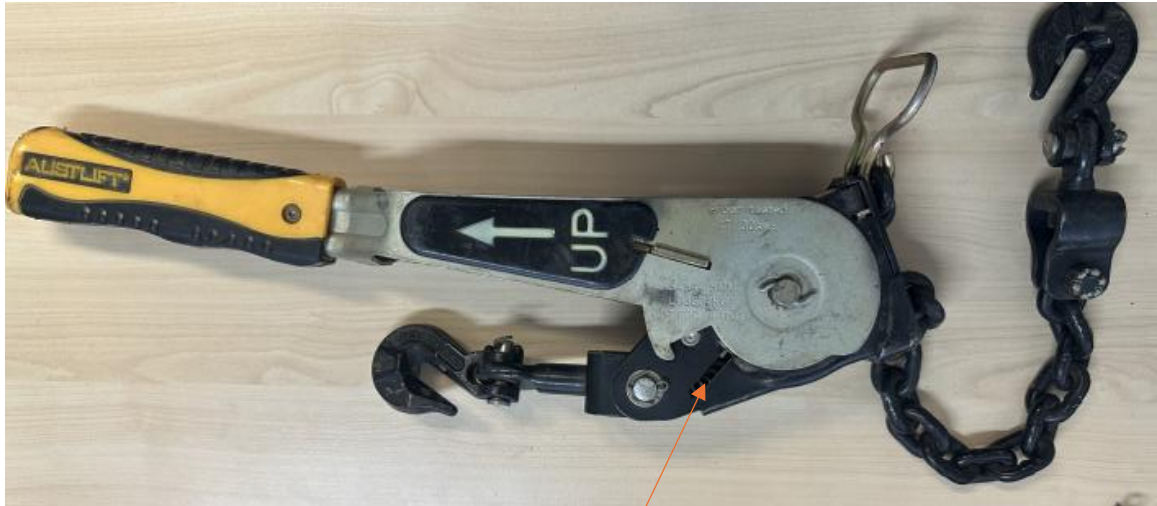


Maxibinder Stopper Plate (Rear Pawl Plate) Replacement Guide



1. Tools needed to disassemble L165-08 Maxibinder.

- Ball Peen Hammer,
- 16MM Combination spanner or open-ended spanner.
- 4MM Allen key,
- Bull nose & long nose pliers
- 16MM socket and wrench



Maxibinder Stopper Plate (Rear Pawl Plate) Replacement Guide

2. DISASSEMBLY OF THE MAXIBINDER

2.1 Open the Maxibinder into the freewheeling position, which will allow the chain to be removed freely.



To remove the lashing chain first. Use long-nose pliers to remove the split pin at the chain swivel locking nut. Use a 16 mm hex wrench and a 16 mm spanner to remove the slotted nut on the connector bolt, and then remove the hook to leave only the chain.



Pull the chain tab to pull the chain free from the Maxibinder.



Maxibinder Stopper Plate (Rear Pawl Plate) Replacement Guide

2.3 Remove the cotter pin at the tail hook swivel with needle-nose pliers, pull out the pin and spacer, and remove the tail hook. Remove the spring and mount.



At this stage, the Maxibinder disassembly should look like this.



2.4 Use a 4MM Allen key wrench to remove the two Front plate screw at the bottom of the body. Tap the front plate lightly with the hammer to remove the plate from the main body



Maxibinder Stopper Plate (Rear Pawl Plate) Replacement Guide

2.5 Use a 16MM hex wrench to hold the head of the main gear pin shaft, and use the bull-nose pliers to straighten one side of the "S" pin to allow the removal of the pin. Pull out the Body pin to remove the handle.



2.6 Using a hammer, tap the head of the chain guard until it moves away from the rubber pad. This will move the ratchet gear and chain guard away from the main body and allow you to remove the Damaged Rear Pawl from its location and replace it with a new one.



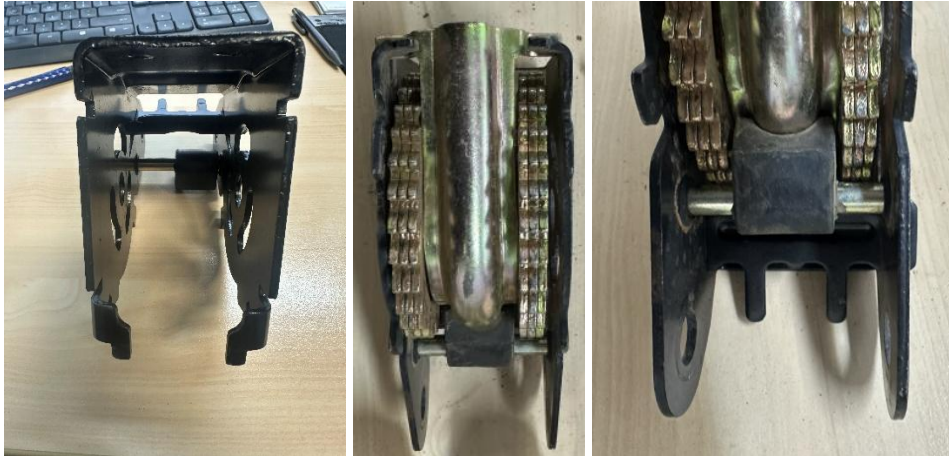
2.7 Ensure that the replacement Rear Pawl plate goes in the same way. There is a locator groove on the main body to assist. The plate will slide down the slot once in position.



Maxibinder Stopper Plate (Rear Pawl Plate) Replacement Guide

REBUILDING THE MAXIBINDER AFTER PLATE REPLACEMENT

- 3.0 Align the chain guard tabs with the four slots at the front of the unit and ensure the rubber pad is also aligned with the chain guard at the rear, and push the ratchet guard assembly back until it locks into position.



- 3.1 Replace the handle and align the main body and handle holes for the Gear pin to be placed back through the unit. Ensure that the handle cutaway for the rear pawl plate is also aligned. Add lubricant to the hole and pin. Install the Gear pin.



- 3.2 Install the straightened "S" pin and, using the 16mm spanner to hold the gear pin, use the bull nose pliers to re-bend the "S" pin back into shape.

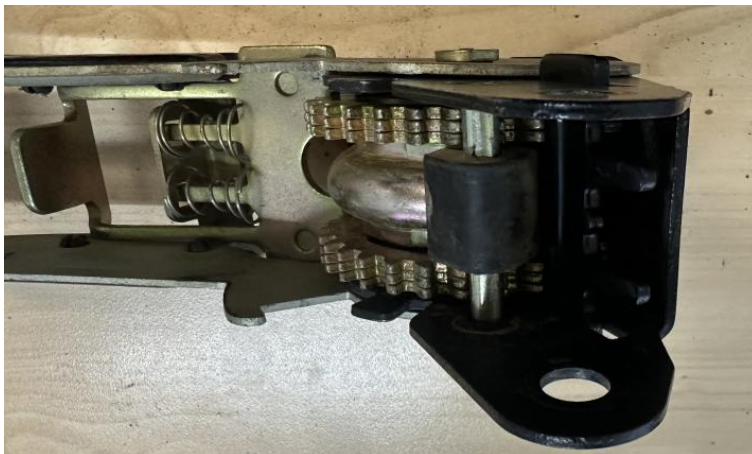


Maxibinder Stopper Plate (Rear Pawl Plate) Replacement Guide

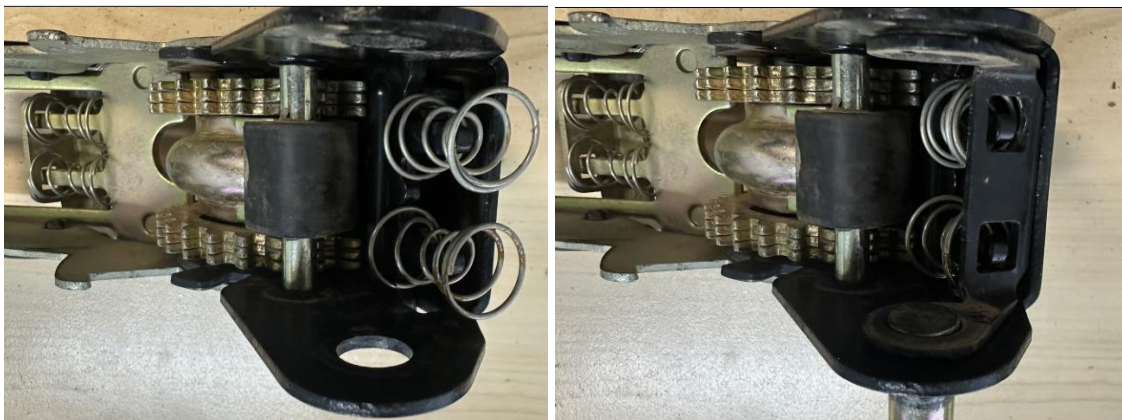
3.3 Re-attach the front plate by engaging the bottom of the plate to its location slots located on the main body and gently tapping using a hammer the top of the plate until the screw holes align, before tightening the screws with the 4mm allen key. Add a small amount of lubricant to the threads.



3.4 Open the Maxibinder handle to a 90° position and face the main body tail hook area facing upwards. This allows the rebuilding of the rear pawl spring gear and tail hook

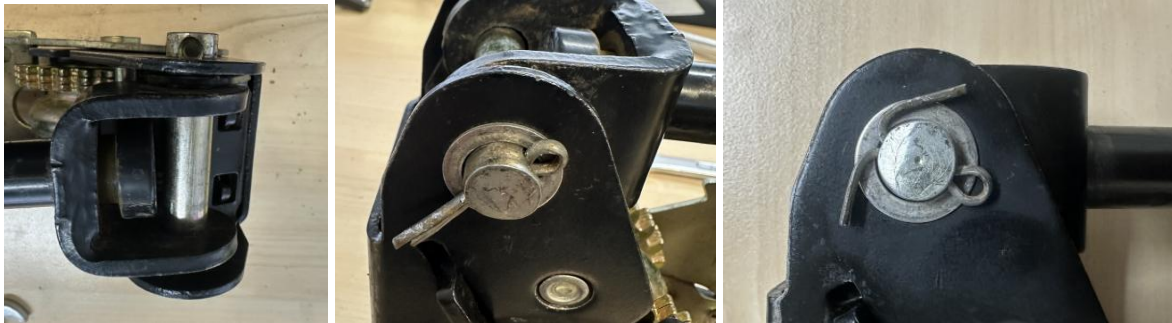


3.5 Assemble the rear pawl plate by placing the rear pawl springs first, the spring bracket second, making sure that the Rear pawl plate tabs align with the holes in the spring bracket.

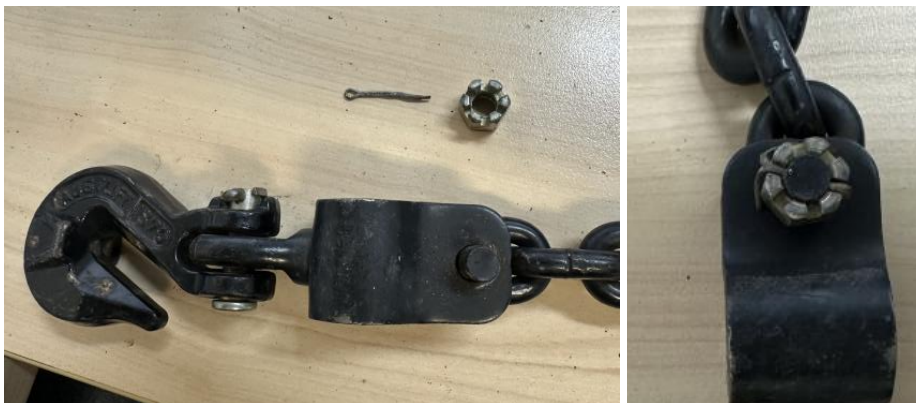


Maxibinder Stopper Plate (Rear Pawl Plate) Replacement Guide

3.6 Place the tail hook swivel together until the cross holes are aligned to allow the tail hook pin to be pushed through. Place the spacer and split pin into position, and open both legs of the split pin with the long nose pliers to hold the tail hook pin in place.



3.7 Place the Maxibinder back into the freewheeling position. This will allow the load chain to be fed back through the ratchet and chain wheel. Feed the chain through as per the image and reattach the chain swivel back onto the chain, tighten the slotted nut, taking note to align the slot with the split pin hole in the bolt, open the split pin using the long nose pliers



Maxibinder Stopper Plate (Rear Pawl Plate) Replacement Guide

3.8 While still in the freewheeling position, add lubricant to the following points and hand wind the chain in the binder for the full length to ensure it is working properly.

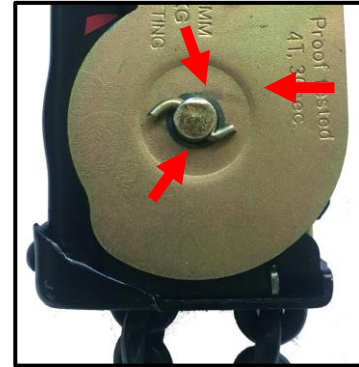


Silicon grease spray is recommended by the manufacturer. Best when applied with a nozzle/straw.

Figure 3. Key lubrication



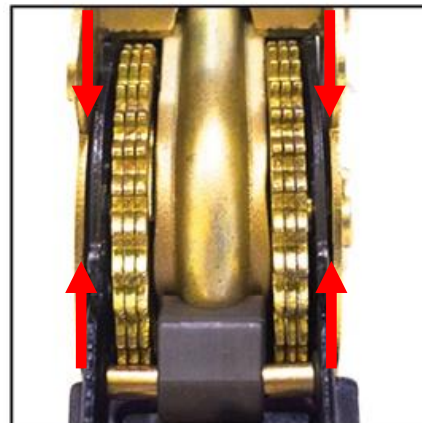
a) Between pin and handle



*b) Between pin and handle
(opposite side)*



*c) Through chain guard
towards the chain wheel*

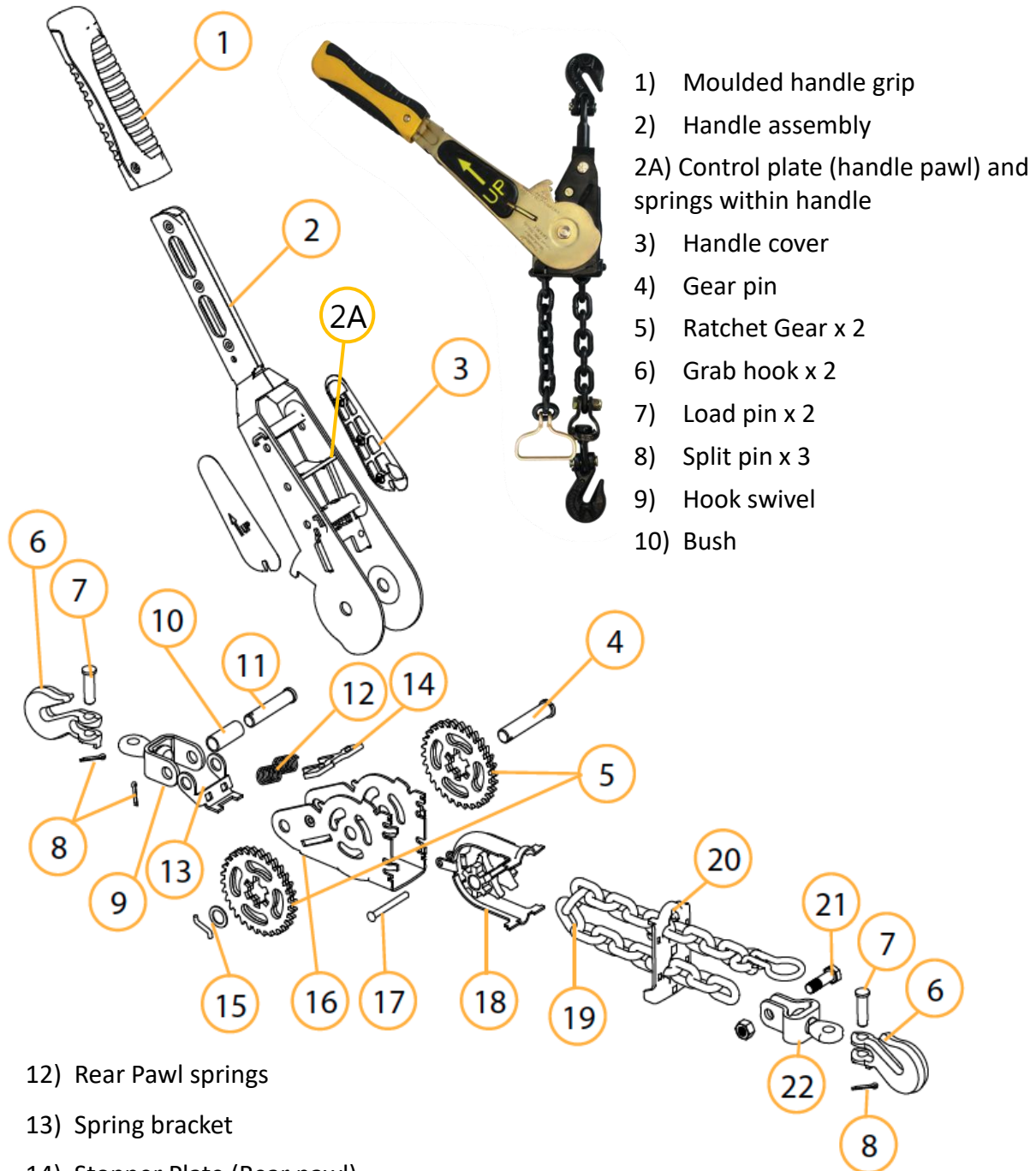


*d) Between handle and body
plates*

YOUR MAXIBINDER IS NOW READY FOR USE

Maxibinder Stopper Plate (Rear Pawl Plate) Replacement Guide

PARTS LISTING AND TERMINOLOGY



12) Rear Pawl springs

13) Spring bracket

14) Stopper Plate (Rear pawl)

15) Gear washer and "S" pin

16) Main body

17) Body pin

18) Chain guard and chain wheel

20) Chain guide

21) Swivel bolt

22) Chain (or tail) swivel