



SpanSet®

01

Height Safety
Lifting
Load Control
Safety Management



SpanSet is here for you:

Switzerland, Australia, Austria, Brasil, China, France, Germany, Hungary, UK, Indonesia, Italy, Poland, Spain, Taiwan, USA

Subject to technical alterations. All rights reserved. No part of this catalogue may be reproduced or processed, duplicated or distributed using electronic systems in any form (print, photocopy, microfilm or any other procedure) without the written approval of the SpanSet company. This catalogue has been prepared with all due care; SpanSet accepts no liability for errors or omissions. © 2012 by SpanSet

Contents

History of SpanSet	4	01.5 Confined Space Solutions	108 – 125
Technical Background	10	Xtripa Manhole Guard System	110
Training	14	Xtripa Tow Bar Hitch Davit System	113
01.1 Harnesses	18 – 55	“H” Base Portable Davit System	114
ERGOpus	20	SRL and Winch Bracket Adapters	115
ERGO	26	Fixed and Semi-Permanent Davits	116
HotWorks	34	Mast Adapters	118
WaterWorks	40	Manhole Access	119
RopeWorks	46	Heavy Duty Tripod	120
ToughWorks	50	Spectre Tripod	121
StageWorks	54	SpanSet Personnel Winches	122
01.2 Lanyards	56 – 85	SpanSet 3 Way Retracting Lifelines	123
ERGOpus	62	4000 Entry and Egress Pulley System	124
ERGO	68		
HotWorks	82		
01.3 Inertia Reels	86 – 93	01.6 Anchorages	126 – 133
Latchways 3.6–15m	88	SpanSet Beam Anchors	128
FAB/Merlin 3–18m	90	SpanSet Horizontal Safety Lines	129
IKH 30–42m	91	Anchorage Lines	130
Latchways sealed 9–40m	92	Rope Grabs	131
Retractable Lanyard	93	Hard Point Anchors	132
01.4 Rescue and Evacuation	94 – 107	Attachment Slings	133
Rescue Solutions	96		
Gotcha™ Kit	98	01.7 Accessories and Kits	134 – 146
Gotcha™ MP Rescue Kit	100	Rescue Accessories	136
Gotcha™ Shark Kit	101	General Accessories	141
Gotcha™ Pole Top Rescue Kit	102	Connectors	142
Gotcha™ 4000 Hauling Kit	103	Safety Kits	144
Gotcha™ TRK Tower Rescue Kit	104		
Red Pro Kit	105	Other Products	146
Gotcha™ CRD	106		



How the safety belt became a safety standard. The story of the SpanSet company.

Fifty years ago the world was very different, cars had no seat belts. But the hour had come for a small Swedish ribbon weaving company.

Today it is hard to imagine that a few decades ago, most cars were shipped without seat belts. In other respects too, little attention was paid to accident prevention at that time, and so many collisions from which today one would emerge unscathed, had fatal consequences.

In order to counter this, the Swedish car company Volvo approached the ribbon weaving companies AB Textilkonst and Klippan at the end of the 1950s, with instructions to develop a safety belt for its vehicles.

Volvo was already building very sturdy cars that withstood the harsh Swedish winters and other tests, but it wanted to continue to improve the safety of the occupants.

Together with Volvo engineers, Klippan developed the first car safety belt in the world, made of high-strength fabric ribbon. It was installed in models Amazon and 544 for the 1st time in 1959 and caused a lot of astonishment in the public, but also ensured an enduring image of Swedish inventions as both pioneering and durable.

How we replaced ropes and chains

The car safety belt was a great success, and soon other manufacturers had also installed it. Thanks to the great demand, Erik Ehnimb, co-owner of Klippan, was able to found the SpanSet company in Malmö in 1966.

The ribbons produced by SpanSet were quickly and enthusiastically employed in many other areas, where up to that point chains and wire ropes had been used, as in the case of the transport of paper. The customers appreciated the enormous load-bearing capacity of the new lashing and lifting belts.

In 1967, Mr. Ehnimb founded SpanSet AG in Hombrechtikon in the Zurich highlands and additional companies in Germany, Italy, France and England. Later, companies in Asia, America and Australia were added, thus forming a global distribution network.

How we make sure that our name will still be highly regarded tomorrow.

SpanSet Australia is based in a modern, purpose-built factory in Emu Plains NSW and has been in operation for over 24 years. The company's vast experience in webbing based products provided the perfect background to develop over 15 years ago the innovative range of height safety equipment in evidence today. This evolved from the introduction of the first Euro style, lightweight harness, which was a dramatic departure from the American influenced heavy and cumbersome harnesses. From our best selling ERGO and ERGOplus ranges through to our solution ranges for heat, corrosive, and high wear applications we always offer genuine value to our end user customers. The range covers all applications from Fall Arrest and Work Positioning to Rope Access and the Gotcha™ Rescue Range.

SpanSet continue to live up to their international heritage of innovations in design with new developments in products and services. The new developments enable us to push beyond the basic Australian Standards for design in Height Safety equipment.

How our inventions became the norm ...

The SpanSet products with their load capacity have gained such a good reputation around the world that international safety standards have been orientated to it.

The development of standards for Height Safety equipment has been significantly influenced by SpanSet. This is how something becomes the norm: by setting a standard. And doing so repeatedly for more than 40 years.

... and our norm influenced new inventions

This also means that we are often called on during the development of a new product (after all, it will eventually be transported by our belts) and also increasingly offer support as a partner for safety training and consultation. This is how SpanSet went from small ribbon weaving company to international forerunner when it comes to Height Safety, transportation and safety – through exceptional performance and recognition.

How we let one world first follow the next

In 1987, SpanSet Australia pioneered the use of synthetic slings in Australia, into a market that previously used wire and chain as the primary materials in lifting assemblies. Manual handling risks were subsequently reduced and the use of synthetic slings today is second nature. Here once again our round slings are regularly referred to generically as "SpanSets".

In 1992, the Horizontal Safety Line – the first temporary horizontal anchorage line to employ a webbing and ratchet system for pretension and to give a predictable deflection during a fall.

The ABS pressure ratchet, another world first, appeared in 1995. This allows a gradual release of the tensioned ratchet, so that goods at risk of falling could be unloaded safely.

2001, The Gotcha™ range of rescue equipment. The first pre-assembled rescue kits offering remote attachment and recovery of a suspended worker. This has led the way in demystifying the rescue function and the Gotcha™ kit is now regularly used as a generic name for rescue kits.

In 2002, SpanSet launched the Tension Force Indicator (TFI) which is integrated in the tensioning ratchet and indicates the pre-tensioning force. Thus, the use of lashing equipment became safer and more economical. The TFI is now incorporated into the premium Horizontal Safety Line above, demonstrating the synergy between synthetic applications in fall protection, lifting and load restraint.

In 2007 SpanSet established the Modular Height Safety Training Courses. Moving training away from generic, non relevant courses, towards industry recognised standard qualifications to which trainees can relate to.

This 2012 Height Safety catalogue showcases the progressive development of our commitment to industry specific fall protection and rescue equipment solutions.

SpanSet – a way to success that always results from being one step ahead!

We are quite proud of our achievements. After all, they have contributed to safer and easier working conditions around the world – and thus to fewer accidents and lower operating costs.

Meeting standards is good. Setting standards is better. The SpanSet brand stands for something. Not only for meeting international safety standards, but for raising them again and again.

This is exactly what we stand for with our products, services and consultancy: for more security than is demanded today – namely, as much as is possible tomorrow.

That is our goal, that is our job and that is our passion. So those working with SpanSet can also fully entrust their safety to our products in the future.

SpanSet – Certified Safety



A group of four workers in safety gear are gathered outdoors. One worker in the foreground wears a yellow high-visibility jacket with 'SpanSet' and 'RESCUE' printed on the back, and a black safety harness. Another worker in the center holds a clipboard and pen, looking at a document. The other workers are wearing hard hats and safety vests. The background shows a white wall and some greenery.

How SpanSet provide customers with working solutions from technical advice through to product supply and training



SpanSet is committed to the design and manufacture of products to meet our customers' needs. We attribute the success of our products to our good listening skills and our policy of continual research and development, covering all applications from basic Fall Arrest and Work Positioning to technical Rope Access and the Gotcha™ Rescue Range. By communicating with our customers from the procurement stage through to the training and implementation stages, SpanSet is able to ensure the right products and services are in place to satisfy our customers' demands. SpanSet's aim is to develop on-going partnerships with its customers to support existing products and to provide solutions to new challenges.

All SpanSet products have been developed to work as part of an overall safety solution, which includes products, training and implementation. By offering our customers an overall solution SpanSet is better able to meet the customers' needs and help them develop safer solutions for work at height.

This can be seen in our work at height products and training packages, which are designed to give tradesmen and plant operators a practical solution to their personal fall protection needs and enable them to comply with all the requirements of work at height regulations.

The ISO System for the Registration of Companies of Assessed Capability – ISO 9001: 2000 – is intended to act as a completely independent and regulated audit of a company's ability to operate an efficient and effective Quality System. This benefits the customer through the absolute assurance of product quality. It can also cut our customers' needs for supplier assessments and received goods inspection costs as well as improving business relationships with our customers. Our scope for registration includes the design, development and manufacture of fall arrest systems.

In addition to our commitment to ISO9001: 2000, SpanSet is also a certified Registered Training Organisation under the Australian Quality Training Framework and as such are able to offer nationally accredited training courses. Additional accreditations include licensing to manufacture AS/NZS 1891.1 certified height safety product, and AS1353 and AS1497 certified synthetic flat and round slings respectively. All of our dynamic and static testing facilities are certified by NATA.



Quality
Endorsed
Company

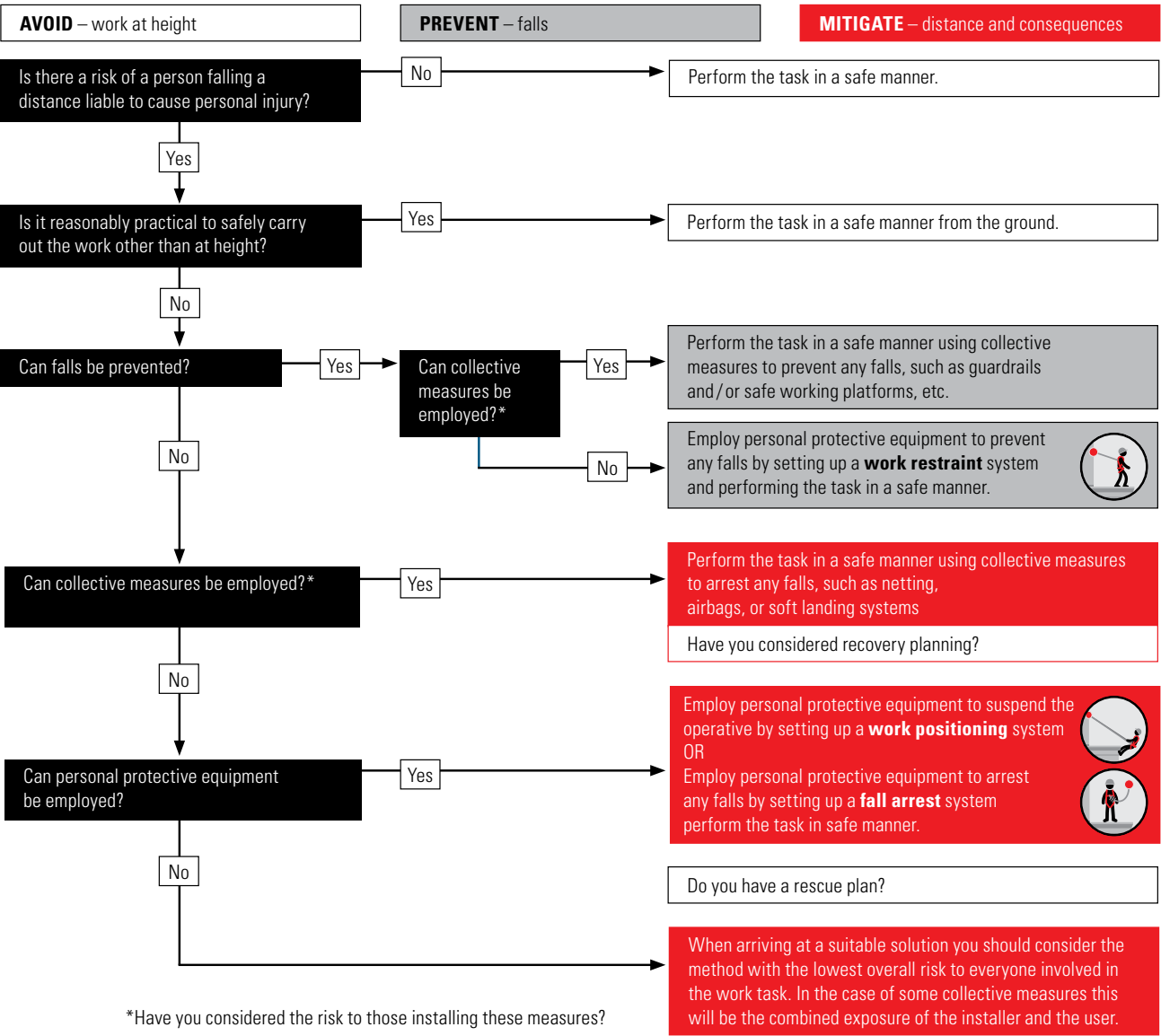


WORLD RECOGNISED
ACCREDITATION





Remember



The 3 categories for the use of personal fall protection equipment



Fall Restraint

Fall restraint is the preferred approach to fall protection – it prevents you from falling and from suffering possible injury from the fall arrest system. Work restraint is a technique which uses PPE to prevent a person from entering an area of where a risk of fall from height exists.



Work Positioning

Work Positioning is a technique for supporting a person while working by means of PPE in tension, in such a way as to prevent a fall.



Fall Arrest

Fall arrest is an approach which makes use of items of PPE to stop a falling person under safe conditions. This means that if a worker is in a position such that if he loses control he will fall, he is required to use PPE to limit both the distance and force of that fall.

Risk Assessment

Where your risk assessment shows a worker can fall, you must carefully plan how you will protect them. There are three basic levels of protection; Avoidance, prevention, or mitigation. If work at height can be avoided then the risk of falling is eliminated.

If it is not possible to avoid working at height ways of preventing a fall should be addressed with preference placed on collective measure which protect all workers. Personal fall protection harnesses should only be used as a last resort. In some situations it is not possible to prevent the fall, for example when climbing between various working levels/ platforms. In this situation the worker requires some form of protection from the effects of the fall. This could be done by reducing the fall distance, or by limiting the impact force felt as the fall is arrested. Again collective systems are given preference to a personal fall protection harness. It may not always be possible to provide fall protection to eliminate the risk of injury, therefore in these situations you must take steps to reduce the risk of falling as much as possible, for example through competence training when workers are left with a step ladder as the only method of work.

If your risk assessment shows that it is acceptable to use personal fall protection your workers will have three ways in which their equipment can be used. It is therefore essential to properly identify environment constraints and the type of protection the workers require. The 3 techniques with which a harness can be used to protect workers are; Fall Restraint, Work Position and Fall Arrest. The workers must properly understand the level of risk and function of their equipment in each technique.

The image shows three workers on a rooftop or elevated platform. They are wearing safety harnesses and helmets. The worker on the left is in a yellow shirt and blue harness. The worker in the middle is in an orange shirt and blue harness. The worker on the right is in an orange shirt and blue harness. They are standing on a concrete surface with a metal railing. In the background, there are city buildings and a large sign that says "HOTEL & CASINO".

SpanSet Training: the link between users and products

The Modular Approach



Introduction

The SpanSet Modular Training approach has been set up to offer a clearer explanation of the options available in Height Safety, Confined Space, Inspection, Evacuation, Rope Access and Vertical Rescue training. This modular approach allows SpanSet to deliver consistent and concise training specific to the clients needs. Extra modules can be added into the training to further enhance the candidate's skills.

SpanSet trainers are highly qualified personnel, all with extensive industry experience. SpanSet delivers training across a wide range of industries such as mining, telecommunications, theatre, councils, government authorities, ports, power authorities, construction and oil and gas drilling rigs. SpanSet can supply all training equipment upon request. SpanSet are leaders in the development of rescue and evacuation training, with training ranging from half day to four day vertical rescue courses targeting both industrial and recreational markets.

- Each module sets out the following;
- The course duration
 - Trainee to instructor ratio
 - Course content
 - Course split between theory and practical sessions

If the modules are selected carefully you will be able to tailor your own course from standard modules. This provides you with a unique product at standard prices with proven consistency and quality.

How it Works

The basis of all of the height safety training courses is Module 01 Height Safety. Appreciation and Inspection. This provides all trainees with a solid foundation in safe work at heights from which they move on to the practical module to complete their competency as a height safety operator. Trainees can then choose extra module to further enhance their qualifications and skills to height safety supervisor, inspector, or manager.

CERTIFICATION
Heights or CPCPCM2015A Work Safely on Roofs will be gained by each candidate. A Statement of Attainment in either RIIOHS204A, CPCCCM1006A Work Safely at once they have completed Module 01 with a practical module of either 02,03 or 04.

TAILOR MADE COURSES
SpanSet can if requested specially tailor make courses to suit your requirements. We try to match your needs of current modules and add extra components as you require. When integrated with standard modules you are able to get the highest level of consistency with the costs of tailor making being kept to a minimum.

CONFINED SPACE TRAINING
SpanSet now offers our unique modular system to confined space training. This is illustrated by our hierarchy chart which allows candidates once they have completed their initial Enter Confined Space training to build on extra modules such as breathing apparatus training to simple non entry confined space rescue training to technical confined space vertical rescue training.

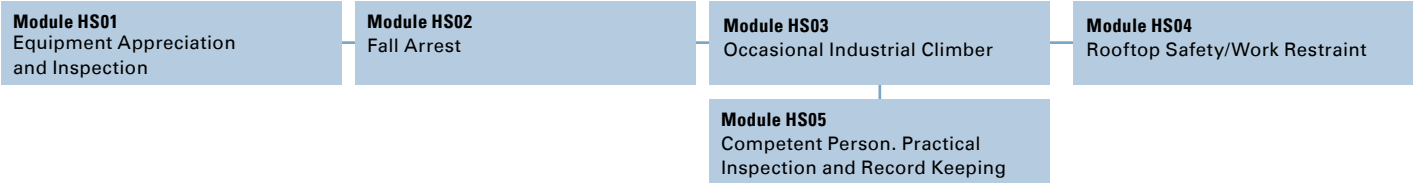
ROPE ACCESS
SpanSet is pleased to offer our unique Rope Access training hierarchy. This new format offers candidates the opportunity to gain qualifications as a rope access operator with no previous experience by successfully completing our intensive 6 day Rope Access Operator course. We also offer qualifications as a rope access technician and rope access supervisor.

RESCUE/EVACUATION FOR INDUSTRY
SpanSet now offers a wide range of both accredited and non accredited rescue and evacuation training. Our distinctive approach to rescue and evacuation training allows simple and effective solutions to post fall rescue.

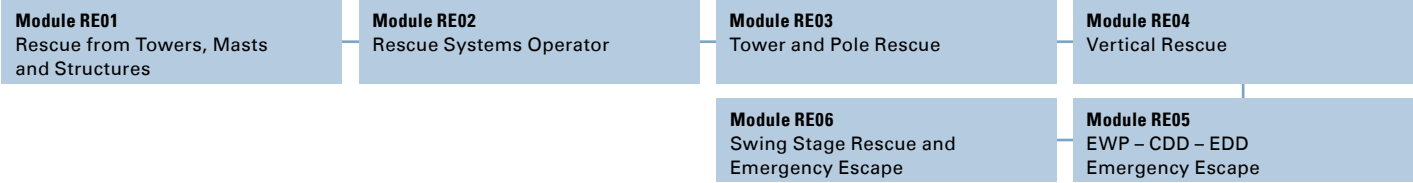
The Modular Approach



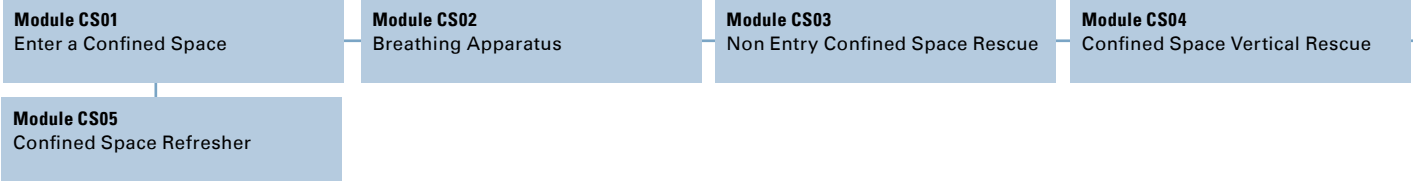
Height Safety for Industry



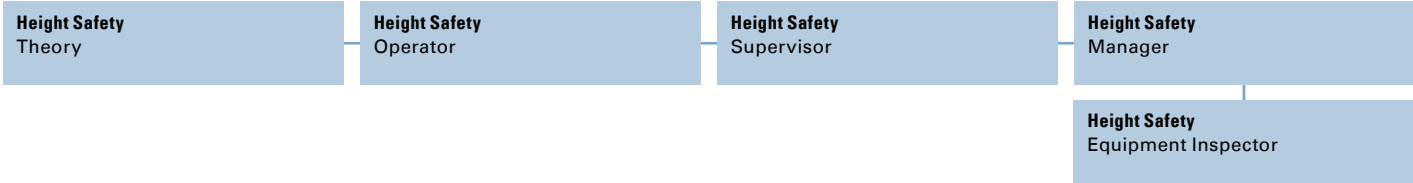
Rescue Evacuation for Industry



Confined Space Training



Height Safety Training and Competency Requirements For AS/NZS Standards



Rope Access Training



01.1

Harneses

ERGOplus	20
ERGO	26
HotWorks	34
WaterWorks	40
RopeWorks	46
ToughWorks	50
StageWorks	54

01.1 HEIGHT SAFETY HARNESSSES

ERGOpus

ERGO
HotWorks
WaterWorks
RopeWorks
ToughWorks
StageWorks



ERGOpus
Premium Harness Range

Safety, comfort and exceptional value.
Introducing the new ERGOpus range of
Harnesses from SpanSet.

Made in Australia, these AS/NZ 1891.1 2007 certified premium harnesses are manufactured to ensure comfort, safety, and practicality. The soft, breathable composite mesh and foam padding gives the harness form, virtually eliminates tangling, and enhances the likelihood of correct fitting. It offers the security of being permanently affixed while still allowing adjustment

Standard Features



- 1 Confined space attachment loops**
Fully encapsulated loops to eliminate snagging and minimise metal components in contact with the body.
- 2 Front D ring rated for fall arrest**
For ease of rescue and attachment. Made to order, no charge options for ERGOpus harnesses.
- 3 Stainless steel easy glide buckles**
Easy to adjust and webbing friendly. They do not creep in use and are as small as possible to minimise contact with the body.
- 4 Suspension relief straps**
Should an operative become suspended and is still conscious, simply join the two adjustable straps together to form a loop into which the operative can stand in order to further relieve the pressure on the inner thigh and work the leg muscles to aide circulation.
- 5 Soft construction**
The hip is a critical pressure point when a fall occurs. The presence of any metal component here can increase the chance of injury, hence our "soft" approach.
- 6 Quick connect buckles**
Ease and convenience add to ready worker acceptance and compliance. Both pawls need to be activated simultaneously to disengage. Has the added layer of safety with double retaining teeth on the male connector.

- 7 Large D ring**
Easy to locate and connect to. The large D is always orientated correctly due to the design and configuration of the webbing. It does not require springs or gadgets to hold it in place.
- 8 Composite foam/mesh breathable padding**
Fits like a jacket and is virtually tangle free. Almost impossible to fit incorrectly leading to safer compliance. Offers the security of being permanently attached while still allowing full adjustment.
- 9 Padded leg straps**
Simplifies the donning by virtually eliminating twists in the leg strap. Greatly enhances comfort should an operative become suspended.
- 10 Sub Pelvic Strap**
The sub pelvic strap eliminates the potential to "peel" out of the harness when falling backwards in a crouched position, (when the folded body allows the buttocks and upper legs to slip out of the back of the harness). Many harnesses do not have this feature or the design is insufficient to retain the person in this manner. Elastic harnesses can be particularly vulnerable to this.

Xtreme-Guard Webbing with Self Healing Matrix
A super soft feel webbing which has been treated with a non toxic compound to maximise oil and water resistance. This makes cleaning a much easier task and enhances abrasion resistance. The treatment will self repair should the extremely thin polymer coating become damaged, due to its plasticine like flow qualities and the ability to re-close mechanically.

Larger sizes to suit:
L = up to XXL shirt size,
XL = 3XL,
XXL = 4XL,
XXXL = 5XL

Stainless Steel 2/3 Bar Buckles
(To replace quick connect buckles)
Add "SS" to code ie: 1100 ERGOpusSS

01.1 HEIGHT SAFETY HARNESSSES

ERGOpus

ERGO
HotWorks
WaterWorks
RopeWorks
ToughWorks
StageWorks



01.1 HEIGHT SAFETY HARNESSSES

ERGOpus

ERGO
HotWorks
WaterWorks
RopeWorks
ToughWorks
StageWorks

1100 ERGOpus

Designation: Full body harness

- Rear fall arrest D
- Front fall arrest D
- Confined space attachment loops
- Fully adjustable leg and shoulder straps
- Fully padded leg and shoulder straps
- Suspension trauma relief straps

Suitable for:

Fall arrest, Confined space entry, Roof work, Ladder systems, Elevated work platforms, Maintenance, Construction etc

Code: 1100 ERGOpus



1107 ERGOpus

Designation: Full body harness

- Rear fall arrest D
- Front fall arrest D
- Padded waist band and side Ds
- Rear fall arrest extension strap
- Confined space attachment loops
- Fully adjustable leg and shoulder straps
- Fully padded leg and shoulder straps
- Suspension trauma relief straps

Suitable for:

Fall arrest, Confined space entry, Roof work, Ladder systems, Elevated work platforms, Pole work, Maintenance, Construction etc

Code: 1107 ERGOpus

1104 ERGOpus

Designation: Full body harness

- Rear fall arrest D
- Front fall arrest D
- Rear fall arrest extension strap
- Confined space attachment loops
- Fully adjustable leg and shoulder straps
- Fully padded leg and shoulder straps
- Suspension trauma relief straps

Suitable for:

Fall arrest, Confined space entry, Roof work, Ladder systems, Elevated work platforms, Maintenance, Construction etc

Code: 1104 ERGOpus



1600 ERGOpus

Designation: Full body tower harness

- Rear fall arrest D
- Front fall arrest loops
- Padded waist band and side pole strap Ds
- Auxiliary buttock pole strap Ds
- Confined space attachment loops
- Fully adjustable padded leg and shoulder straps
- Extra wide suspension seat
- Suspension trauma relief straps

Suitable for:

Fall arrest, Confined space entry, Ladder systems, Tower and pole work, Maintenance, Telecoms etc

Code: 1600 ERGOpus

01.1 HEIGHT SAFETY HARNESSES

ERGOpus

ERGO
HotWorks
WaterWorks
RopeWorks
ToughWorks
StageWorks



01.1 HEIGHT SAFETY HARNESSES

ERGOpus

ERGO
HotWorks
WaterWorks
RopeWorks
ToughWorks
StageWorks

1600 NC ERGOpus

Designation: Full body tower harness—non conductive

- Rear fall arrest webbing D
- Front fall arrest loops
- Padded waist band and side pole strap Ds
- Auxiliary buttock pole strap Ds
- Confined space attachment loops
- Fully adjustable padded leg and shoulder straps
- Extra wide suspension seat
- Suspension trauma relief straps
- No steel hardware above waist

Suitable for:

Fall arrest, Confined space entry, Ladder systems, Tower and pole work, Maintenance, Telecoms etc

Code: 1600NC ERGOpus



1800 ERGOpus

Designation: Full body suspension harness

- Rear fall arrest D
- Front fall arrest and abseil wide mouth Ds
- Padded waist band and side pole strap wide mouth Ds
- Plastic reinforced semi rigid gear loops
- Elasticated rear leg droppers
- Fully adjustable padded leg and shoulder straps
- Quick release shoulder buckle

Suitable for:

Fall arrest, Rescue, Rope access, Roof work, Ladder systems, Tower and pole work, Maintenance, Construction etc

Code: 1800 ERGOpus

1100 ERGOpus Miners

Designation: Full body harness

- Rear fall arrest D
- Front fall arrest D
- Padded waist band with battery and self rescuer straps
- Confined space attachment loops
- Suspension trauma relief straps
- Fully adjustable padded leg and shoulder straps

Suitable for:

Fall arrest, Confined space entry, Ladder systems, Elevated work platforms, Underground mining, Maintenance, Construction etc

Code: 1100 ERGOpus Miners



01.1 HEIGHT SAFETY HARNESSSES

ERGOpus
ERGO
HotWorks
WaterWorks
RopeWorks
ToughWorks
StageWorks



ERGO
Harness Range

Introducing the new ERGO range of Harnesses from SpanSet. Made in Australia, these AS/NZ 1891.1 2007 approved value harnesses are manufactured to ensure comfort, safety, and practicality. The breathable rear mesh panel gives the harness form, simplifies donning and minimises tangling. Features SpanSet redundancy backup design and robust construction.

Standard Features



- 1 Confined space attachment loops**
Fully encapsulated loops to eliminate snagging and minimise metal components in contact with the body.

2 Front D ring rated for fall arrest
For ease of attachment and ideal for ladder systems work. Greatly enhances rescue access should an operative become suspended.

3 Polished steel easy glide buckles
Easy to adjust and webbing friendly. They do not creep in use, and are as small as possible to minimise metal contact with the body.

4 Suspension relief straps
Should an operative become suspended and is still conscious, simply join the two adjustable straps together to form a loop into which the operative can stand in order to further relieve the pressure on the inner thigh and work the leg muscles to aide circulation.

5 Soft construction
The hip is a critical pressure point when a fall occurs. The presence of any metal component here can increase the chance of injury, hence our "soft" approach.

6 2/3 bar connecting buckles
Ease and convenience add to ready worker acceptance and compliance. Secure and reliable while still being easy to adjust.
- 7 Large Rear D ring**
Easy to locate and connect to. The large D is always orientated correctly due to the design and configuration of the webbing. It does not require springs or gadgets to hold it in place.

8 Breathable rear mesh panel
Fits like a jacket and allows the quick identification of the correct donning orientation while giving the harness "body" and form.

9 Sub Pelvic Strap
The sub pelvic strap minimises the potential to "peel" out of the harness when falling backwards in a crouched position, (when the folded body allows the buttocks and upper legs to slip out of the back of the harness).

01.1 HEIGHT SAFETY HARNESSES

ERGOplus
ERGO
HotWorks
WaterWorks
RopeWorks
ToughWorks
StageWorks



01.1 HEIGHT SAFETY HARNESSES

ERGOplus
ERGO
HotWorks
WaterWorks
RopeWorks
ToughWorks
StageWorks

1100 ERGO

Designation: Full body harness

- Rear fall arrest D
- Front fall arrest D
- Confined space attachment loops
- Fully adjustable leg and shoulder straps
- Breathable rear mesh panel
- Hi-vis webbing
- Suspension trauma relief straps

Suitable for:

Fall arrest, Confined space entry, Roof work
Ladder systems, Elevated work platforms,
Maintenance, Construction etc

Code: 1100 ERGO



1107 ERGO

Designation: Full body harness

- Rear fall arrest D
- Front fall arrest D
- Padded waist band and side Ds
- Rear fall arrest extension strap
- Confined space attachment loops
- Fully adjustable leg and shoulder straps
- Breathable rear mesh panel
- Hi-vis webbing
- Suspension trauma relief straps

Suitable for:

Fall arrest, Confined space entry, Roof work
Ladder systems, Elevated work platforms,
Pole work, Maintenance, Construction etc

Code: 1107 ERGO

1104 ERGO

Designation: Full body harness

- Rear fall arrest D
- Front fall arrest D
- Rear fall arrest extension strap
- Confined space attachment loops
- Fully adjustable leg and shoulder straps
- Breathable rear mesh panel
- Hi-vis webbing
- Suspension trauma relief straps

Suitable for:

Fall arrest, Confined space entry, Roof work
Ladder systems, Elevated work platforms,
Maintenance, Construction etc

Code: 1104 ERGO



1300 ERGO

Designation: Full body harness

- Rear fall arrest D
- Front fall arrest D
- Waist band and side Ds
- Confined space attachment loops
- Fully adjustable leg and shoulder straps
- Breathable rear mesh panel
- Hi-vis webbing
- Suspension trauma relief straps

Suitable for:

Fall arrest, Confined space entry, Roof work
Ladder systems, Elevated work platforms,
Pole work, Maintenance, Construction etc

Code: 1300 ERGO

01.1 HEIGHT SAFETY HARNESSSES

ERGOplus
ERGO
HotWorks
WaterWorks
RopeWorks
ToughWorks
StageWorks



01.1 HEIGHT SAFETY HARNESSSES

ERGOplus
ERGO
HotWorks
WaterWorks
RopeWorks
ToughWorks
StageWorks

1500 ERGO

Designation: Full body tower harness

- Rear fall arrest D
- Auxiliary 75mm pole strap rings
- Padded waist band and side pole strap Ds
- Front fall arrest loops
- Confined space attachment loops
- Fully adjustable leg and shoulder straps
- Breathable rear mesh panel
- Hi-vis webbing
- Suspension trauma relief straps

Suitable for:

Fall arrest, Confined space entry,
Ladder systems, Tower and pole work,
Maintenance, Construction etc

Code: 1500 ERGO



1100 MINER

Designation: Full body harness

- Rear fall arrest D
- Front fall arrest D
- Padded waist band with battery and self rescuer straps
- Confined space attachment loops
- Fully adjustable leg and shoulder straps
- Breathable rear mesh panel
- Hi-vis webbing
- Suspension trauma relief straps

Suitable for:

Fall arrest, Confined space entry,
Ladder systems, Elevated work platforms,
Underground mining, Maintenance,
Construction etc

Code: 1100 Miner

1800 ERGO

Designation: Full body suspension harness

- Rear fall arrest D
- Front fall arrest and abseil wide mouth Ds
- Padded waist band and side pole strap wide mouth Ds
- Plastic reinforced gear loops
- Elasticated rear leg droppers
- Fully adjustable leg and shoulder straps
- Quick release shoulder buckle
- Hi-vis webbing

Suitable for:

Fall arrest, Rescue, Rope access,
Roof work Ladder systems, Tower and pole work,
Maintenance, Construction etc

Code: 1800 ERGO



1150 ERGO

Designation: Full body harness

- Rear fall arrest D
- Front fall arrest D
- 1.8m energy absorbing lanyard permanently attached
- Confined space attachment loops
- Fully adjustable leg and shoulder straps
- Breathable rear mesh panel
- Hi-vis webbing
- Suspension trauma relief straps

Suitable for:

Fall arrest, Confined space entry, Ladder
systems, Elevated work platforms,
Hire industry, Maintenance, Construction etc

Code: 1150 ERGO

01.1 HEIGHT SAFETY HARNESSES

ERGOplus
ERGO
HotWorks
WaterWorks
RopeWorks
ToughWorks
StageWorks



01.1 HEIGHT SAFETY HARNESSES

ERGOplus
ERGO
HotWorks
WaterWorks
RopeWorks
ToughWorks
StageWorks

1150 ERGO NC

Designation: Full body harness, non conductive (waist up)

- Rear fall arrest webbing D
- Front fall arrest loops
- Elasticated energy absorbing lanyard permanently attached
- Confined space attachment loops
- Fully adjustable leg and shoulder straps
- Breathable rear mesh panel
- Hi-vis webbing
- Suspension trauma relief straps

Suitable for:
Fall arrest, Confined space entry, Live line
Ladder systems, Elevated work platforms,
Hire industry, Maintenance, Construction etc

Code: 1150NC ERGO



1100 SCAFFOLDER

Designation: Full body harness

- Rear fall arrest D
- Front fall arrest D
- Heavy duty abrasion resistant shoulder strap sleeves
- Fully adjustable leg and shoulder straps
- Breathable rear mesh panel
- Hi-vis webbing
- Suspension trauma relief straps

Suitable for:
Fall arrest, Scaffold tube and planking tasks,
Ladder systems, Elevated work platforms,
Maintenance, Construction etc

Code: 1100 Scaffolder



2700 POLE STRAP

2.5m pole strap with adjuster and Snap Hooks
comes with polyester webbing wear sleeve.
3.5m (2701) also available.

Code: 2700



2750 STEELWORK POLE STRAP

2.5m pole strap with adjuster and Snap Hooks
comes with robust Secutex cut resistant wear
sleeve. Secutex is used extensively throughout
industry to protect synthetic lifting slings from
sharp edges and generally outlasts the synthetic
sling/pole strap.

Code: 2750



ERGOpus
ERGO
HotWorks
WaterWorks
RopeWorks
ToughWorks
StageWorks



HotWorks
Premium Heat Resistant Range

Introducing the new HotWorks range of Harnesses from SpanSet. Made in Australia, these AS/NZ 1891.1 2007 approved premium harnesses are manufactured to ensure comfort, safety and practicality. The soft Heracron/Meta aramid webbing is heat resistant for welding and hotwork applications, while the padding is constructed from INDURA ultrasoft heat and molten splash resistant material.



Standard Features



ERGOpus
ERGO
HotWorks
WaterWorks
RopeWorks
ToughWorks
StageWorks

- 1 Confined space attachment loops**
Reverse folded loops to eliminate snagging and minimise metal components in contact with the body.

2 Front attachments rated for fall arrest
For versatility and ease of rescue.

3 Stainless steel easy glide buckles
Easy to adjust and webbing friendly. They do not creep in use and are as small as possible to minimize metal contact with the body.

4 Soft construction
The hip is a critical pressure point when a fall occurs. The presence of any metal component here can increase the chance of injury, hence our “soft” approach.

5 Padded leg straps
Simplifies the donning by virtually eliminating twists in the leg strap. Greatly enhances comfort should an operative become suspended.

6 Large D ring
Easy to locate and connect to. The large D is always orientated correctly due to the design and configuration of the webbing. It does not require springs or gadgets to hold it in place.
- 7 Composite foam breathable padding**
Soft and cotton like feel for additional comfort and excellent heat resistance.

8 Sub pelvic strap
The sub pelvic strap eliminates the potential to “peel” out of the harness when falling backwards in a crouched position, (when the folded body allows the buttocks and upper legs to slip out of the back of the harness). Many harnesses do not have this feature or the design is insufficient to retain the person in this manner. Elastic harnesses can be particularly vulnerable to this.

Suspension Relief Straps
available separately

Heracron/Meta Aramid Webbing
Heat resistant webbing after exposure to direct flame. Internal fibres of Meta Aramid (black) and Heracron (yellow) remain unaffected.



Made to order, no charge options for HotWorks harnesses.
Quick Release Steel Buckles.
Add “QB” to code ie: 1100 HotWorks QB



01.1 HEIGHT SAFETY HARNESSSES

ERGOplus
ERGO
HotWorks
WaterWorks
RopeWorks
ToughWorks
StageWorks



1100 HotWorks

Designation: Full body harness

- Rear fall arrest D
- Front fall arrest loops
- Confined space attachment loops
- Fully adjustable leg and shoulder straps
- Fully padded leg and shoulder straps

Suitable for:

Fall arrest, Confined space entry, Roof work
Ladder systems, Elevated work platforms,
Maintenance, Construction etc

Code: 1100 HotWorks



1107 HotWorks

Designation: Full body harness

- Rear fall arrest D
- Front fall arrest loops
- Confined space attachment loops
- Side pole strap Ds
- Fully adjustable leg and shoulder straps
- Heat resistant padded leg and waist straps

Suitable for:

Fall arrest, Confined space entry, Roof work
Ladder systems, Elevated work platforms,
Maintenance, Construction etc

Code: 1107 HotWorks



1600 HotWorks

Designation: Full body tower harness

- Rear fall arrest D
- Front fall arrest loops
- Padded waist band and side pole strap Ds
- Auxiliary buttock pole strap Ds
- Confined space attachment loops
- Padded waist and buttock/suspension strap
- Extra wide suspension seat

Suitable for:

Fall arrest, Confined space entry, Ladder
systems, Tower and pole work, Maintenance,
Telecoms etc

Code: 1600 HotWorks



1800 HotWorks

Designation: Full body suspension harness

- Rear fall arrest D
- Front fall arrest and abseil wide mouth Ds
- Padded waist band and side pole strap wide mouth Ds
- Stainless steel 2 bar buckles
- Elasticated rear leg droppers
- Fully adjustable padded leg straps
- Quick release shoulder buckle

Suitable for:

Fall arrest, Rescue, Rope access, Roof work,
Ladder systems, Tower and pole work,
Maintenance, Construction etc

Code: 1800 HotWorks



01.1 HEIGHT SAFETY HARNESSSES

ERGOplus
ERGO
HotWorks
WaterWorks
RopeWorks
ToughWorks
StageWorks



1300 HotWorks

Designation: Full body harness

- Rear fall arrest D
- Front fall arrest loops
- Side pole strap Ds
- Confined space attachment loops
- Fully adjustable leg and shoulder straps

Suitable for:

Fall arrest, Confined space entry, Roof work, Ladder systems, Elevated work platforms, Maintenance, Construction etc

Code: 1300 HotWorks



2700 HotWorks Pole Strap

Heat resistant Pole Strap with adjuster and H1 hooks each end.

Suitable for pole, tower, access and climbing applications.

Code: 2700 HotWorks



FULL PAGE PIC?

For further information
www.spanset.com.au/height_safety

01.1 HEIGHT SAFETY HARNESSSES

ERGOplus
ERGO
HotWorks
WaterWorks
RopeWorks
ToughWorks
StageWorks



WaterWorks
Premium Corrosion Resistant Range

Introducing the new WaterWorks range of harnesses from SpanSet, suited to the extreme environments of the offshore, oil and gas, chemical, water utilities and sewerage treatment Industries.

Made in Australia these AS/NZ 1891.1 2007 approved premium harnesses are manufactured to ensure comfort , safety, and longevity, incorporating our Xtreme-guard oil, water and abrasion resistant webbing.

The soft, fixed, breathable composite mesh and foam padding gives the harness form, virtually eliminates tangling, and enhances the likelihood of correct fitting.

Fitted with corrosion resistant stainless steel D rings and buckles which feature no moving parts for the ultimate in reliability and safety. Non padded versions are also offered.

Standard Features



- 1 Confined space attachment loops**
Fully encapsulated loops to eliminate snagging and minimise metal components in contact with the body.

2 Front stainless steel D ring rated for fall arrest
For ease of rescue.

3 Stainless steel easy glide buckles
Easy to adjust and webbing friendly. They do not creep in use and are as small as possible to minimise metal contact with the body.

4 Suspension relief straps
Should an operative become suspended and is still conscious, simply join the two adjustable straps together to form a loop into which the operative can stand in order to further relieve the pressure on the inner thigh and work the leg muscles to aide circulation.

5 Soft construction
The hip is a critical pressure point when a fall occurs. The presence of any metal component here can increase the chance of injury, hence our “soft” approach.

6 Stainless steel easy glide 2/3 bar connector buckles.
Safe and proven over many years to be the most secure method of connection. These buckles have no moving parts, no catches or springs to get jammed by dirt, dust, or loose clothing. Corrosion resistant, easy to adjust and sized to minimise the metal to body contact.
- 7 Padded leg straps**
Simplifies the donning by virtually eliminating twists in the leg strap. Greatly enhances comfort should an operative become suspended.

8 Large stainless steel D ring
Easy to locate and connect to. The large D is always orientated correctly due to the design and configuration of the webbing. It does not require springs or gadgets to hold it in place.

9 Integral composite foam/mesh breathable padding
Fits like a jacket and is virtually tangle free. Almost impossible to fit incorrectly leading to safer compliance. Offers the security of being permanently affixed while still allowing full adjustment.

10 Sub Pelvic Strap
The sub pelvic strap eliminates the potential to “peel” out of the harness when falling backwards in a crouched position, (when the folded body allows the buttocks and upper legs to slip out of the back of the harness). Many harnesses do not have this feature or the design is insufficient to retain the person in this manner.

Xtreme-Guard Webbing with Self Healing Matrix
A super soft feel webbing which has been treated with a non toxic compound to maximise oil and water resistance. This makes cleaning a much easier task and enhances abrasion resistance. The treatment will self repair should the extremely thin polymer coating become damaged due to its plasticine like flow qualities and the ability to re-close mechanically affected areas itself.

01.1 HEIGHT SAFETY HARNESSES

ERGOplus
ERGO
HotWorks
WaterWorks
RopeWorks
ToughWorks
StageWorks



01.1 HEIGHT SAFETY HARNESSES

ERGOplus
ERGO
HotWorks
WaterWorks
RopeWorks
ToughWorks
StageWorks

1100 WaterWorks Premium

Designation:Full body harness

- Stainless steel rear D
- Front fall arrest stainless steel D
- Stainless steel buckles
- Confined space loops on shoulders
- Fully adjustable padded leg straps and shoulder/back straps
- Easy-flow sweat absorbing mesh and foam composite padding
- Fitted with suspension trauma relief straps

Suitable for:

Fall arrest, Confined space entry, Roof work, Ladder systems, Elevated work platforms, Maintenance, Construction in corrosive environments etc

Code: 1100WW Premium



1100 WaterWorks

Designation: Full body harness

- Stainless steel rear D
- Front fall arrest stainless steel D
- Stainless steel buckles
- Confined space loops on shoulders
- Fully adjustable padded leg straps and shoulder/back straps
- Fitted with suspension trauma relief straps

Suitable for:

Fall arrest, Confined space entry, Roof work, Ladder systems, Elevated work platforms, Maintenance, Construction in corrosive environments etc

Code: 1100WW

1107 WaterWorks Premium

Designation:Full body harness

- Stainless steel rear D
- Front fall arrest stainless steel D
- Stainless steel side pole strap Ds
- Stainless steel buckles
- Confined space loops on shoulders
- Fully adjustable padded leg straps and shoulder/back straps
- Easy-flow sweat absorbing mesh and foam composite padding
- Fitted with suspension trauma relief straps

Suitable for:

Fall arrest, Confined space entry, Roof work, Ladder systems, Elevated work platforms, Maintenance, Construction in corrosive environments etc

Code: 1107WW Premium



1300 WaterWorks

Designation: Full body harness

- Stainless steel rear D
- Front fall arrest stainless steel D
- Side pole strap stainless steel Ds
- Stainless steel buckles
- Confined space loops on shoulders
- Fully adjustable padded leg straps and shoulder/back straps
- Fitted with suspension trauma relief straps

Suitable for:

Fall arrest, Confined space entry, Roof work, Ladder systems, Pole work, Elevated work platforms, Maintenance, Construction in corrosive environments etc

Code: 1300WW

01.1 HEIGHT SAFETY HARNESSSES

ERGOplus
ERGO
HotWorks
WaterWorks
RopeWorks
ToughWorks
StageWorks



1800 WaterWorks

Designation: Full body suspension harness

- Rear fall arrest stainless D
- Front fall arrest and abseil stainless Ds
- Padded waist band and side pole strap with stainless Ds
- Plastic reinforced gear loops
- Elasticated rear leg droppers
- Fully adjustable leg and shoulder straps
- Stainless shoulder buckles
- Hi-vis webbing

Suitable for:

Fall arrest, Rescue, Rope access, Roof work, Ladder systems, Tower and pole work, Maintenance, Construction etc

Code: 1800WW



1100 WaterWorks ERGO – Miners

Designation: Full body harness

- Rear fall arrest stainless D
- Front fall arrest stainless D
- Padded waist band with battery and self rescuer straps
- Confined space attachment loops
- Fully adjustable leg and shoulder straps
- Padded shoulder and leg straps
- Hi-vis webbing
- Suspension trauma relief straps

Suitable for:

Fall arrest, Confined space entry, Ladder systems, Elevated work platforms, Underground mining, Maintenance, Construction etc

Code: 1100WW ERGO Miners



For further information
www.spanset.com.au/height_safety

01.1 HEIGHT SAFETY HARNESSES

ERGOplus
ERGO
HotWorks
WaterWorks
RopeWorks
ToughWorks
StageWorks



**RopeWorks
Lightweight Harness Range**

RopeWorks Premium

Introducing the new RopeWorks range of Harnesses from SpanSet. Made in Australia, these AS/NZ 1891.1 2007 approved premium harnesses are manufactured to ensure comfort, safety, and practicality.

Ultra lightweight to minimise fatigue and improve worker acceptance. This range takes height safety to a new level while our Xtreme-Guard oil, water and abrasion resistant webbing ensures on-going value for the user.

Standard Features



- 1 Aluminium Buckles**
Easy to adjust and webbing friendly. They do not creep in use and are as small as possible to minimise metal contact with the body.
- 2 Quick connect buckle**
Ease and convenience add to ready worker acceptance and compliance. Both pawls need to be activated simultaneously to disengage. Placed only where required.
- 3 Forged Aluminium D Rings**
Lightweight, strong and where you need them.
- 4 Composite foam/mesh breathable padding**
Fits like a jacket and is virtually tangle free. Almost impossible to fit incorrectly leading to safer compliance. Permanently affixed while still allowing adjustment.

- 5 Xtreme Guard webbing**
Superior oil, water and abrasion resistance adds to extended product life.
- 6 Reinforced waist pad**
30mm thick padding for comfort with stiffened outer shell for added support.
- 7 Semi rigid tool loops**
For quick and positive connection of karabiners and accessories.
- 8 Elasticated leg droppers**
For added comfort and auto adjustment when standing or sitting.

**Xtreme-Guard Webbing with
Self Healing Matrix**

A super soft feel webbing which has been treated with a non toxic compound to maximise oil and water resistance. This makes cleaning a much easier task and enhances abrasion resistance. The treatment will self repair should the extremely thin polymer coating become damaged due to mechanical influences, because of its plasticine like flow qualities and the ability to re-close mechanically affected areas itself.

01.1 HEIGHT SAFETY HARNESSES

ERGOpus
ERGO
HotWorks
WaterWorks
RopeWorks
ToughWorks
StageWorks



01.1 HEIGHT SAFETY HARNESSES

ERGOpus
ERGO
HotWorks
WaterWorks
RopeWorks
ToughWorks
StageWorks

1800 ERGO RopeWorks

Designation: Full body suspension harness

- Rear fall arrest D
- Front fall arrest and abseil wide mouth Ds
- Padded waist band and side pole strap wide mouth Ds
- Plastic reinforced semi rigid gear loops
- Elasticated rear leg droppers
- Fully adjustable padded leg and shoulder straps
- Quick release shoulder buckle

Suitable for:

Fall arrest, Rescue, Rope access, Roof work, Ladder systems, Tower and pole work, Maintenance, Construction etc

Code: 1800 ERGO RW



1600 ERGO RopeWorks

Designation: Full body tower harness

- Rear fall arrest D
- Front fall arrest loops
- Padded waist band and side pole strap Ds
- Auxiliary buttock pole strap Ds
- Confined space attachment loops
- Fully adjustable padded leg and shoulder straps
- Extra wide suspension seat
- Suspension trauma relief straps

Suitable for:

Fall arrest, Confined space entry, Ladder systems, Tower and pole work, Maintenance, Telecoms etc

Code: 1600 ERGO RW



1100 ERGO RopeWorks

Designation: Full body harness

- Rear fall arrest D
- Front fall arrest D
- Confined space attachment loops
- Fully adjustable leg and shoulder straps
- Fully padded leg and shoulder straps
- Suspension trauma relief straps

Suitable for:

Fall arrest, Confined space entry, Roof work, Ladder systems, Elevated work platforms, Maintenance, Construction etc

Code: 1100 ERGO RW



01.1 HEIGHT SAFETY HARNESSES

ERGOpus
ERGO
HotWorks
WaterWorks
RopeWorks
ToughWorks
StageWorks



ToughWorks
Abrasion Resistant Harness Range

Introducing the new ToughWorks range of Harnesses from SpanSet. Made in Australia these AS/NZ 1891.1 2007 approved premium harnesses are manufactured to ensure comfort, safety and practicality. Tough, PVC coated webbing ensures on-going value for the user.

Standard Features



- 1 Confined space attachment loops**
Fully encapsulated loops to eliminate snagging and minimise metal components in contact with the body.

2 Front D ring rated for fall arrest
For ease of rescue and attachment.

3 PVC coated webbing
For greater abrasion resistance in high wear applications

4 Steel slotted easy glide buckles
Easy to adjust and webbing friendly. They do not creep in use and are as small as possible to minimise metal contact with the body.

5 Suspension relief straps
Should an operative become suspended and is still conscious, simply join the two adjustable straps together to form a loop into which the operative can stand in order to further relieve the pressure on the inner thigh and work the leg muscles to aide circulation.

5 Soft construction
The hip is a critical pressure point when a fall occurs. The presence of any metal component here can increase the chance of injury, hence our “soft” approach.
- 7 Padded leg straps**
Simplifies the donning by virtually eliminating twists in the leg strap. Greatly enhances comfort should an operative become suspended.

8 Large D ring
Easy to locate and connect to. The large D is always orientated correctly due to the design and configuration of the webbing. It does not require springs or gadgets to hold it in place.

9 Composite foam/mesh breathable padding
Fits like a jacket and is virtually tangle free. Almost impossible to fit incorrectly leading to safer compliance. Offers the security of being permanently attached while still allowing full adjustment.

10 Sub Pelvic Strap
The sub pelvic strap eliminates the potential to “peel” out of the harness when falling backwards in a crouched position, (when the folded body allows the buttocks and upper legs to slip out of the back of the harness). Many harnesses do not have this feature or the design is insufficient to retain the person in this manner. Elastic harnesses can be particularly vulnerable to this.

01.1 HEIGHT SAFETY HARNESSSES

ERGOplus
ERGO
HotWorks
WaterWorks
RopeWorks
ToughWorks
StageWorks



1100 ERGO ToughWorks

Designation: Full body harness

- Rear fall arrest D
- Front fall arrest D
- Confined space attachment loops
- Fully adjustable leg and shoulder straps
- Fully padded leg and shoulder straps
- Suspension trauma relief straps

Suitable for:

Fall arrest, Confined space entry, Roof work, Ladder systems, Elevated work platforms, Maintenance, Construction etc

Code: 1100 PVC



1107 ERGO ToughWorks

Designation: Full body harness

- Rear fall arrest D
- Front fall arrest D
- Padded waist band and side Ds
- Rear fall arrest extension strap
- Confined space attachment loops
- Fully adjustable leg and shoulder straps
- Fully padded leg and shoulder straps
- Suspension trauma relief straps

Suitable for:

Fall arrest, Confined space entry, Roof work, Ladder systems, Elevated work platforms, Pole work, Maintenance, Construction etc

Code: 1107 PVC



For further information
www.spanset.com.au/height_safety

01.1 HEIGHT SAFETY HARNESSES

ERGOplus
ERGO
HotWorks
WaterWorks
RopeWorks
ToughWorks
StageWorks

StageWorks

Specifically designed for stage and background work for the entertainment industry and any clandestine applications where reduced equipment visibility is desirable. All black non reflective fittings and webbing ensure total discretion during tasks.

1800 ERGO StageWorks

Designation: Full body suspension harness

- Rear fall arrest D
- Front fall arrest and abseil wide mouth D’s
- Padded waist band and side pole strap wide mouth D’s
- Plastic reinforced gear loops
- Elasticated rear leg droppers
- Fully adjustable leg and shoulder straps
- Quick release shoulder buckle
- Black webbing and metal components

Suitable for:

Entertainment, staging and clandestine – Fall arrest, Rescue, Rope access, Roof work, Ladder systems, Tower and pole work, Maintenance, Construction etc

Code: 1800 ENT



1100 ERGO StageWorks Premium

Designation: Full body harness

- Rear fall arrest D
- Front fall arrest D
- Confined space attachment loops
- Fully adjustable leg and shoulder straps
- Fully padded shoulders and legs
- Black webbing and metal components
- Suspension trauma relief straps

Suitable for:

Entertainment, staging and clandestine – Fall arrest, Confined space entry, Roof work, Ladder systems, Elevated work platforms, etc

Code: 1100 ERGO ENT Premium



01.1 HEIGHT SAFETY HARNESSES

ERGOplus
ERGO
HotWorks
WaterWorks
RopeWorks
ToughWorks
StageWorks



1100 ERGO StageWorks

Designation: Full body harness

- Rear fall arrest D
- Front fall arrest D
- Confined space attachment loops
- Fully adjustable leg and shoulder straps
- Black webbing and metal components
- Suspension trauma relief straps

Suitable for:

Entertainment, staging and clandestine — Fall arrest, Confined space entry, Roof work, Ladder systems, Elevated work platforms, Maintenance, Construction etc

Code: 1100 ERGO ENT



3055 StageWorks

Energy absorbing lanyard with Scaffold Hook in black.

Code: 3055ENT



6002 StageWorks

Entertainment fall protection kit containing 1 x 1100ENT full body harness, 1 x 3055ENT Energy absorbing lanyard, 1 x RCB2010 2t 1m black round sling, 1 x K bag–Black kit bag

Code: 6002ENT





01.2

Lanyards

ERGOpus	62
ERGO	68
HotWorks	82

ERGOplus
ERGO
HotWorks



ERGOplus Premium energy absorbing lanyards are designed to minimise the forces endured by an operator should a fall occur. Maximum user weight is 140kg while still remaining within the parameters and certification to AS/NZS 1891.1 2007. No additional fall clearance needs to be calculated when performing risk assessments. Lightweight aluminium components and Xtreme guard webbing combine to add outstanding safety and value to this range.

Standard Features



- 1 Aluminium lightweight fittings**
Robust and lightweight, offers genuine user acceptance and confidence with less fatigue and high quality feel and function.
- 2 140kg tear web energy absorber**
Does not require additional fall clearance to comply to Australian standards.
- 3 Kernmantle Rescue standard rope**
11mm kernmantle rope fully complies to AS 4142.3 with full length tracer tape and contrasting sheath over a white core. This allows an objective inspection criteria by highlighting the damaged sheath against the inner core and takes the guesswork and assumptions out of the inspection process.
- 4 High density contrasted stitching**
The high density multiple bar tack sew pattern resists abrasion better than traditional patterns. The contrasting colour makes inspection easier.

- 5 XtremeGuard webbing**
Highly abrasion resistant webbing gives better value and safety through longevity. Oil and liquid resistance aides the cleaning process and accelerates drying times. All this in a webbing that is soft and pliable to the touch.
- 6 Stowage loops on all twin lanyards**
The need for an operator to avoid connecting an unused leg of a twin lanyard is critical. To avoid this, each SpanSet twin leg lanyard has clearly marked stowage points for unused lanyard legs. They are also rated in case of misuse.



ERGOpus
ERGO
HotWorks



ERGOpus Fittings

H1 Alu



K10 Alu



H3BF



H3WBF



H3 Alu



ERGOpus
ERGO
HotWorks



Fitting Specifications

Code	Description	Gate Type	Gate Opening	Strength	Gate Strength	Weight	Material
H1Alu	Safety Hook	Double Action	23mm	25kN	≥1kN	200g	Aluminium
H3Alu	Safety Scaffold Hook	Double Action	60mm	25kN	≥1kN	459g	Aluminium
H3 BF	Safety Jumbo Scaffold Hook	Double Action	110mm	25kN	≥1kN	915g	Aluminium
H3 WBF	Safety Wire Scaffold Hook	Double Action	86mm	20kN	≥1kN	488g	Aluminium
K10Alu	Fixed Eye Karabiner	Triple Action	20mm	25kN	≥1kN	120g	Aluminium

01.2 LANYARDS

ERGOplus
ERGO
HotWorks



ERGOplus Webbing Lanyards

3053 K10 ERGOplus



3058 ERGOplus



01.2 LANYARDS

ERGOplus
ERGO
HotWorks



ERGOplus Webbing Lanyards

Code	Type	Material	Length	Fitting at Shock Absorber	Fitting at Free End(s)
3053 ERGOplus	Single Leg	Webbing	1.8m	H1Alu Snap Hook	H1Alu Snap Hook
3055 ERGOplus	Single Leg	Webbing	1.8m	H1Alu Snap Hook	H3Alu Scaffold Hook
3058 ERGOplus	Twin Leg	Webbing	1.8m	H1Alu Snap Hook	H3Alu Scaffold Hook
3053A ERGOplus	Single Leg Adjustable	Webbing	0.75 – 1.8m	H1Alu Snap Hook	H1Alu Snap Hook
3055A ERGOplus	Single Leg Adjustable	Webbing	0.75 – 1.8m	H1Alu Snap Hook	H3Alu Scaffold Hook
3058A ERGOplus	Twin Leg Adjustable	Webbing	0.75 – 1.8m	H1Alu Snap Hook	H3Alu Scaffold Hook

01.2 LANYARDS

ERGOpus
ERGO
HotWorks



ERGOpus Elastic Lanyards

3055E ERGOpus



3058E ERGOpus



01.2 LANYARDS

ERGOpus
ERGO
HotWorks



ERGOpus Elastic Lanyards

Code	Type	Material	Length	Fitting at shock absorber	Fitting at free end(s)
3053E ERGOpus	Single Leg	Webbing	1.4 – 1.8m	H1Alu Snap Hook	H1Alu Snap Hook
3055E ERGOpus	Single Leg	Webbing	1.4 – 1.8m	H1Alu Snap Hook	H3Alu Scaffold Hook
3058E ERGOpus	Twin Leg	Webbing	1.4 – 1.8m	H1AluSnap Hook	H3Alu Scaffold Hook
3053E K10 ERGOpus	Single Leg	Webbing	1.4 – 1.8m	K10Alu Snap Hook	K10Alu Snap Hook
3058E BF ERGOpus	Twin Leg	Webbing	1.4 – 1.8m	H1Alu Snap Hook	H3BF Scaffold Hook
3058E WBF ERGOpus	Twin Leg	Webbing	1.4 – 1.8m	H1Alu Snap Hook	H3WBF Scaffold Hook

01.2 LANYARDS

ERGOpus
ERGO
HotWorks



ERGOpus Rope Lanyards

3063A



3068A ERGOpus



01.2 LANYARDS

ERGOpus
ERGO
HotWorks



ERGOpus Rope Lanyards

Code	Type	Material	Length	Fitting at shock absorber	Fitting at free end(s)	Weight
3061 ERGOpus	Single Leg	Rope	1.8m	H1Alu Snap Hook	H1Alu Snap Hook	900g
3063 ERGOpus	Single Leg	Rope	1.8m	H1Alu Snap Hook	H3Alu Scaffold Hook	1246g
3068 ERGOpus	Twin Leg	Rope	1.8m	H1Alu Snap Hook	H3Alu Scaffold Hook	2030g
3063A ERGOpus	Single Leg Adjustable	Rope	1.8m	K10 Alu Karabiner	H3Alu Scaffold Hook	1661g
3068A ERGOpus	Twin Leg Adjustable	Rope	1.8m	K10 Alu Karabiner	H3Alu Scaffold Hook	2260g

ERGOpus
ERGO
HotWorks



ERGO energy absorbing lanyards are designed to minimise the forces endured by an operator should a fall occur. All SpanSet lanyards feature back up straps should the tear web be fully deployed and all are certified to AS/NZS 1891.1 2007.

With heavy duty, alloy steel, corrosion resistant components and high tenacity polyester webbing they offer outstanding safety and value to this range.

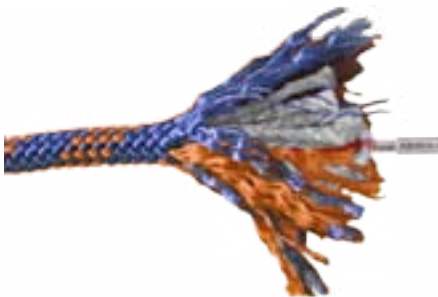
Standard Features



- 1 Heavy duty alloy steel fittings**
Robust and lightweight, offers genuine user acceptance and confidence with corrosion resistance, high quality feel, and smooth function.
- 2 Tear web energy absorber**
Limits the forces to under 6kN should a fall occur as per Australian/New Zealand standards.
- 3 High tensile contrasted stitching**
The high tensile computerised sew pattern give repeatable uniformity compared to manual sew patterns. The contrasting colour makes inspection easier.
- 4 Stowage loops on all twin lanyards**
The need for an operator to avoid connecting an unused leg of a twin lanyard is critical. To avoid this, each SpanSet twin leg lanyard has clearly marked stowage points for unused lanyard legs. They are also rated in case of misuse.

- 5 Polyester webbing**
High tenacity polyester webbing gives better value, strength and safety through longevity. Polyester is UV resistant and does not lose strength when it becomes wet. All this in a high visibility webbing that is soft and pliable to the touch.
- 6 Kernmantle Rescue standard rope**
11mm kernmantle rope fully complies to AS 4142.3 with full length tracer tape and contrasting sheath over a white core. This allows an objective inspection criteria by highlighting the damaged sheath against the inner core and takes the guesswork and assumptions out of the inspection process..

Kernmantle Rescue Standard Rope



01.2 LANYARDS

ERGOpus
ERGO
HotWorks



ERGO Fittings



01.2 LANYARDS

ERGOpus
ERGO
HotWorks



Fitting Specifications

Code	Description	Gate Type	Gate Opening	Strength	Gate Strength	Material	Weight
K2	Oval Karabiner	Screw Gate	15mm	25kN	≥1kN	Alloy Steel	157g
K4	Equal D Karabiner	Triple Action	24mm	30kN	≥1kN	Alloy Steel	183g
K10	Forged Eye Karabiner	Triple Action	20mm	50kN	≥1kN	Alloy Steel	257g
H3	Safety Scaffold Hook	Double Action	51mm	25kN	≥1kN	Alloy Steel	415g
H3HD	Safety Scaffold Hook	Double Action	60mm	25kN	≥16kN	Alloy Steel	780g
H3L	Safety Scaffold Hook	Double Action	64mm	25kN	≥1kN	Alloy Steel	603g
H1	Safety Hook	Double Action	21mm	25kN	≥1kN	Carbon Steel	280g
H1HD	Safety Hook	Double Action	21mm	45kN	≥16kN	Carbon Steel	369g
N3050	Safety Back Hook	Double Action	21mm	45kN	≥16kN	Alloy Steel	454g

01.2 LANYARDS

ERGOplus
ERGO
HotWorks



ERGO Webbing Lanyards

3053



3058



01.2 LANYARDS

ERGOplus
ERGO
HotWorks



ERGO Webbing Lanyards

Code	Type	Material	Length	Fitting at Shock Absorber	Fitting at Free End(s)	Weight
3051	Shock Absorber	Webbing	0.45m	K2 Karabiner	K2 Karabiner	720g
3053	Single Leg	Webbing	1.8m	H1 Snap Hook	H1 Snap Hook	107g
3053 K4	Single Leg	Webbing	1.8m	K4 Karabiner	K4 Karabiner	960g
3054	Single Leg	Webbing	1.2m	H1 Snap Hook	H1 Snap Hook	1050g
3054 K4	Single Leg	Webbing	1.2m	K4 Karabiner	K4 Karabiner	940g
3055	Single Leg	Webbing	1.8m	H1 Snap Hook	H3 Scaffold Hook	1320g
3055 K4	Single Leg	Webbing	1.8m	K4 Karabiner	H3 Scaffold Hook	1265g
3058	Twin Leg	Webbing	1.8m	H1 Snap Hook	H3 Scaffold Hook	2035g
3058 K4	Twin Leg	Webbing	1.8m	K4 Karabiner	K4 Karabiner	1490g
3053A	Single Leg Adjustable	Webbing	1.8m	H1 Snap Hook	H1 Snap Hook	1220g
3055A	Single Leg Adjustable	Webbing	1.8m	H1 Snap Hook	H3 Scaffold Hook	1470g
3058A	Twin Leg Adjustable	Webbing	1.8m	H1 Snap Hook	H3 Scaffold Hook	2335g
3055L	Single Leg	Webbing	1.8m	H1L Snap Hook	H3l Scaffold Hook	1430g
3058L	Twin Leg	Webbing	1.8m	H1 Snap Hook	H3l Scaffold Hook	2255g

01.2 LANYARDS

ERGOpus
ERGO
HotWorks



ERGO Elastic Lanyards

3053E



3058E



01.2 LANYARDS

ERGOpus
ERGO
HotWorks



ERGO Elastic Lanyards

Code	Type	Material	Length	Fitting at Shock Absorber	Fitting at Free End(s)	Weight
3053E	Single Leg	Webbing	1.4 – 1.8m	H1 Snap Hook	H1 Snap Hook	1115g
3055E	Single Leg	Webbing	1.4 – 1.8m	H1 Snap Hook	H3 Scaffold Hook	1310g
3058E	Twin Leg	Webbing	1.4 – 1.8m	H1 Snap Hook	H3 Scaffold Hook	1723g
3053E K4	Single Leg	Webbing	1.4 – 1.8m	K4 Karabiner	K4 Karabiner	1005g
3053E K10	Single Leg	Webbing	1.4 – 1.8m	K10 Karabiner	K10 Karabiner	1015g
3058E K4	Twin Leg	Webbing	1.4 – 1.8m	K4 Karabiner	K4 Karabiner	1669g
3058E K10	Twin Leg	Webbing	1.4 – 1.8m	K10 Snap Hook	H3 Scaffold Hook	1690g

01.2 LANYARDS

ERGOplus
ERGO
HotWorks



ERGO Rope Lanyards

3061



3063



3061A



01.2 LANYARDS

ERGOplus
ERGO
HotWorks



ERGO Rope Lanyards

Code	Type	Material	Length	Fitting at Shock Absorber	Fitting at Free End(s)	Weight
3061	Single Leg	Rope	1.8m	H1Snap Hook	H1 Snap Hook	1215g
3061 K4	Single Leg	Rope	1.8m	K4 Karabiner	K4 Karabiner	1105g
3063	Single Leg	Rope	1.8m	H1 Snap Hook	H3 Scaffold Hook	1400g
3063 K4	Single Leg	Rope	1.8m	K4 Karabiner	K4 Karabiner	1100g
3068	Twin Leg	Rope	1.8m	H1 Snap Hook	H3 Scaffold Hook	1723g
3068 K4	Twin Leg	Rope	1.8m	K4 Karabiner	K4 Karabiner	1723g
3061A K4	Single Leg Adjustable	Rope	1.8m	K4 Karabiner	K4 Karabiner	1688g
3063A K4	Single Leg Adjustable	Rope	1.8m	K4 Karabiner	H3 Scaffold Hook	1878g
3068A K4	Twin Leg Adjustable	Rope	1.8m	K4 Karabiner	H3 Scaffold Hook	2535g

ERGOplus
ERGO
HotWorks



ERGO Heavy Duty Lanyards

3053HD



3053 BH HD



ERGOplus
ERGO
HotWorks



ERGO Heavy Duty Lanyards

Code	Type	Material	Length	Fitting at Shock Sbsorber	Fitting at Free End(s)	Weight
3053 HD	Single Leg 140kg	Webbing	1.8m	H1HD Trip Resistant Snap Hook	H1HD Trip Resistant Snap Hook	1240g
3055 HD	Single Leg 140kg	Webbing	1.8m	H1HD Trip Resistant Snap Hook	H3HD Scaffold Hook	1605g
3058 HD	Twin Leg 140kg	Webbing	1.8m	H1HD Trip Resistant Snap Hook	H3HD Scaffold Hook	2720g
3053 BH HD	Single Leg Back Hook 140kg	Webbing	1.8m	H1HD Trip Resistant Snap Hook	N-3050 Back Hook	1365g
3053E HD	Single Leg 140kg	Elastic Webbing	1.8m	H1HD Trip Resistant Snap Hook	H1HD Trip Resistant Snap Hook	1265g
3055E HD	Single Leg 140kg	Elastic Webbing	1.8m	H1HD Trip Resistant Snap Hook	H3HD Scaffold Hook	1630g
3058E HD	Twin Leg 140kg	Elastic Webbing	1.8m	H1HD Trip Resistant Snap Hook	H3HD Scaffold Hook	2770g

01.2 LANYARDS

ERGOplus
ERGO
HotWorks



Other Lanyards

3053 WW K4



3072



01.2 LANYARDS

ERGOplus
ERGO
HotWorks



Other Lanyards

Code	Type	Material	Length	Fitting at Shock Absorber	Fitting at Free End(s)	Weight
3053 WW K4	Single Leg	Webbing	1.8m	K4 Stainless Karabiner	K4 Stainless Karabiner	1040g
3055 ENT	Black Single Leg	Webbing	1.8m	H1 Snap Hook Black	H3 Scaffold Hook Black	1320g
3051	Shock Absorber	Webbing	0.45m	K2 Karabiner	K2 Karabiner	720g
3201	Retracting	Webbing	2.25m	K4 Karabiner	K4 Karabiner	1365g
3072 K4	Single Leg	Wire Rope	1.8m	K4 Karabiner	K4 Karabiner	1280g
3073 K4	Single Leg	Wire Rope	1.8m	K4 Karabiner	H3 Scaffold Hook	1415g
3072	Single Leg	Wire Rope	1.8m	H1 Snap Hook	H1 Snap Hook	1390g
3073	Single Leg	Wire Rope	1.8m	H1 Snap Hook	H3 Scaffold Hook	1470g

ERGOplus
ERGO
HotWorks



ERGOplus
ERGO
HotWorks

ERGO HotWorks energy absorbing lanyards are designed to protect workers in heat affected environments such as welding and grinding. Utilizing tough Heracron/Meta Aramid webbing and Indura ultrasoft energy absorber covers, these lanyards outperform and outlast standard polyester lanyards, which would otherwise be condemned due to burns and spatter damage.

All SpanSet lanyards feature back up straps should the tear web be fully deployed, and all are certified to AS/NZS 1891.1 2007.

With heavy duty, alloy steel, corrosion resistant components, they offer outstanding safety and value to this range.

Standard Features



- 1 Heavy duty alloy steel fittings**
Robust and lightweight, offers genuine user acceptance and with corrosion confidence resistance, high quality feel, and smooth function.
- 2 High tensile contrasted stitching**
The high tensile computerised sew pattern give repeatable uniformity compared to manual sew patterns. The contrasting colour makes inspection easier.
- 3 Tear web energy absorber**
Limits the forces to under 6kN should a fall occur as per Australian/New Zealand standards.
- 4 Indura Ultrasoft enrgy absorber covers**
Protect the shock pack from heat damage but still removable for Inspection as per standard lanyards.
- 5 Stowage loops on all twin lanyards**
The need for an operator to avoid connecting an unused leg of a twin lanyard is critical. To avoid this, each SpanSet twin leg lanyard has clearly marked stowage points for unused lanyard legs. They are also rated in case of misuse.
- 6 Heracron/Meta Aramid webbing**
High tenacity aramid fibre webbing for heat, abrasion and UV resistance



01.2 LANYARDS

ERGOpus
ERGO
HotWorks



HotWorks Lanyards
Specifications

3053 HotWorks



3055 HotWorks



3058 HotWorks



01.2 LANYARDS

ERGOpus
ERGO
HotWorks



HotWorks Lanyards
Specifications

Code	Type	Material	Length	Fitting at shock absorber	Fitting at free end(s)	Weight
3053 HotWorks	Single Leg	Heracron/ Meta Aramid	1.8m	H1 Snap Hook	H1 Snap Hook	1125g
3055 HotWorks	Single Leg	Heracron/ Meta Aramid	1.8m	H1 Snap Hook	H3 Scaffold Hook	1315g
3058 HotWorks	Twin Leg	Heracron/ Meta Aramid	1.8m	H1 Snap Hook	H3 Scaffold Hooks	2085g

For further information
www.spanset.com.au/height_safety

01.3

Inertia Reels

LW Series 3.6–15m	88
FAB/Merlin 3–18m	90
IKH 30–42m	91
LW Series Sealed 9–40m	92
Retracting Lanyard	93

01.3 INERTIA REELS

LW Series 3.6–15m

FAB/Merlin 3–18m
IKH 30–42m
LW Series Sealed 9–40m
Retracting Lanyard



01.3 INERTIA REELS

LW Series 3.6–15m

FAB/Merlin 3–18m
IKH 30–42m
LW Series Sealed 9–40m
Retracting Lanyard

The ManSafe SRL has been developed with unique features to provide a smarter, safer and better alternative to traditional sealed SRLs.

Smarter

- LW Series patented Constant Force braking system is a frictionless braking system that won’t go out of adjustment.

Safer

- The advanced Full Contact technology is 100% reliable, the user being able to check this by feeling and hearing the ‘clicking’ as the lifeline extends and retracts.
- A built-in reserve line ensures a fall is arrested safely even when the cable is fully extended.

Better

- Internal components are protected by rubber seals ensuring the spring locking mechanism and absorber are completely impenetrable.
- The modular design allows quick and easy servicing of both the cable and absorber, facilitating the opportunity for either in-house, or third party, service personnel to service the SRL ensuring minimal ‘downtime’.

LW Series 3.6m



LW Series Sealed 7m



LW Series Inertia Reels

Code	Length	Lifeline	Casing	Connector	Weight	Field serviceable	Size mm
LW62004	3.6m	Webbing	Impact Resistant Nylon	Swivel Snap Hook	1.9kg	Yes	221 x 142 x 99
LW62007	7.0m	Webbing	Impact Resistant Nylon	Swivel Snap Hook	3.8kg	Yes	275 x 185 x 125
LW62407	7.0m	5mm Galvanised Cable	Impact Resistant Nylon	Swivel Snap Hook	4.9kg	Yes	330 x 170 x 122
LW62407S	7.0m	5mm Stainless Steel Cable	Impact Resistant Nylon	Swivel Stainless Karabiner	4.9kg	Yes	330 x 170 x 122
LW62410	10m	5mm Stainless Steel Cable	Impact Resistant Nylon	Swivel Stainless Karabiner	5.6kg	Yes	357 x 185 x 125
LW62410S	10m	5mm Stainless Steel	Impact Resistant Nylon	Swivel Karabiner	5.6kg	Yes	357 x 185 x 125
LW62415	15m	5mm Galvanised Cable	Impact Resistant Nylon	Swivel Snap Hook	7.4kg	Yes	396 x 215 x 130
LW62415S	15m	5mm Stainless Steel Cable	Impact Resistant Nylon	Swivel Stainless Karabiner	7.4kg	Yes	396 x 215 x 130

01.3 INERTIA REELS

LW Series 3.6–15m
FAB/Merlin 3–18m
IKH 30–42m
LW Series Sealed 9–40m
Retracting Lanyard



Outstanding compliance value with these steel case Merlin 3.3m and the plastic case FAB 10m and 18m units. All units have load indicating hooks for ease of inspection.

FAB and Merlin Inertia Reels

Code	Length	Lifeline	Casing	Connector	Weight (with hardware)	Field Serviceable	Size L x W x D mm
UB033	3.3m	Webbing	Aluminium	Swivel Triple Action Karabiner	1.6kg	No	141 x 107 x 61
FAB3W	3.0m	Webbing	Plastic	Swivel Triple Action Karabiner	1.4kg	No	388 x 120 x 85
FAB10	10m	5mm Galvanised Cable	ABS Plastic	Swivel Triple Action Karabiner	4.1kg	No	244 x 183 x 144
FAB18	18m	5mm Galvanised Cable	ABS Plastic	Swivel Triple Action Karabiner	6.5kg	No	300 x 226 x 144

FAB10
FAB18



UB033
Merlin 3.3



FAB3W



01.3 INERTIA REELS

LW Series 3.6–15m
FAB/Merlin 3–18m
IKH 30–42m
LW Series Sealed 9–40m
Retracting Lanyard



IKH 30–42m Inertia Reels

Code	Length	Lifeline	Casing	Connector	Weight	Field Serviceable	Size L x W x D mm
IKH30-0	30m	5mm Galvanised Cable	Cast Aluminium	Swivel Double Action Snap Hook	18.0kg	No	640 x 320 x 120
IKH42-0	42m	5mm Galvanised Cable	Cast Aluminium	Swivel Double Action Snap Hook	27.2kg	No	750 x 370 x 120

This aluminium housed fall arrest block is a sturdy heavy duty, low maintenance device fitted with a steel rope lifeline, terminated with a steel double action hook.

IKH-42



IKH-30



01.3 INERTIA REELS

LW Series 3.6–15m
FAB/Merlin 3–18m
IKH 30–42m
LW Series Sealed 9–40m
Retracting Lanyard



Super robust for the most extreme environments these sealed units can be serviced in the field with minimal training. IP56 certified.

LW Series Sealed Inertia Reels

Code	Length	Lifeline	Casing	Connector	Weight	Field Serviceable	Size L x W x D mm
LW62810	9m	5mm Stainless Steel Cable	Aluminium/ Stainless Steel	Swivel Stainless Karabiner	9.5kg	Yes	240 x 240 x 180
LW62816	15m	5mm Stainless Steel Cable	Aluminium/ Stainless Steel	Swivel Stainless Karabiner	12.0kg	Yes	280 x 280 x 200
LW62826	25m	5mm Stainless Steel Cable	Aluminium/ Stainless Steel	Swivel Stainless Karabiner	20.0kg	Yes	330 x 330 x 200
LW62841	40m	5mm Stainless Steel Cable	Aluminium/ Stainless Steel	Swivel Stainless Karabiner	26.0kg	Yes	380 x 380 x 215

Latchways 15m sealed



Latchways 15m sealed



01.3 INERTIA REELS

LW Series 3.6–15m
FAB/Merlin 3–18m
IKH 30–42m
LW Series Sealed 9–40m
Retracting Lanyard



Retracting Lanyard

Code	Length	Lifeline	Casing	Connector	Weight	Field Serviceable	Size L x W x D mm
3201	2.25m	50mm Webbing	Steel/Plastic	Triple Action Karabiners	1.2kg	No	240 x 110 x 75

A lightweight 2.25m retracting lanyard which is ideal for many light duty applications such as order pickers, EWPs, static lines etc. Comes complete with triple action karabiners and an integral energy absorber

3201



For further information
www.spanset.com.au/height_safety



01.4

Rescue and Evacuation

Rescue Solutions	96
Gotcha™ Kit	98
Gotcha™ MP Rescue Kit	100
Gotcha™ Shark Kit	101
Gotcha™ Pole Top Rescue Kit	102
Gotcha™ 4000 Hauling Kit	103
Gotcha™ TRK Tower Rescue Kit	104
Red Pro Kit	105
Gotcha™ CRD	106

01.4 RESCUE AND EVACUATION

Rescue Solutions

- Gotcha™ Kit
- Gotcha™ MP Rescue Kit
- Gotcha™ Shark Kit
- Gotcha™ Pole Top Rescue Kit
- Gotcha™ 4000 Hauling Kit
- Gotcha™ TRK Tower Rescue Kit
- Red Pro Kit
- Gotcha™ CRD

Industry Sectors that require Rescue and Evacuation



Telecommunications



Oil and Gas




Steel Work



Wind Energy



Scaffolding



Maintenance



Rope Access



Tower Crane Access



Roof Work



Construction



Electrical



Elevated Work Platforms / Hire Industry



Pallet Racking



Construction Emergency Response

Why SpanSet can help you find a solution.

If you have selected a method of working that could result in a worker being suspended in a harness, for example fall arrest, or work positioning techniques, then you must consider the rescue implications.

Rescue for personnel suspended at height is an issue that needs addressing for workers, whether they are at 2m or 200m. Traditionally a great deal of emphasis has been placed on this area by those working in extreme environments and quite rightly so. It also applies however to areas that appear more straightforward, but in these areas it is seldom addressed.

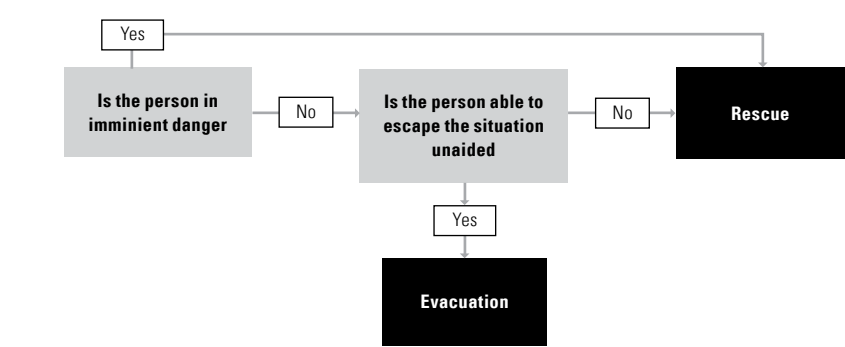
Unconsciousness or death can occur to a suspended casualty even though they may not be injured after their initial fall. This is due to a decrease in the effective circulation of oxygenated blood around the body caused by a combination of factors, such as body position, compression by the harness and a lack of muscle pumping of venous blood. If the worker is able to move, or relieve the pressure points, then the side effects can be dramatically reduced.

However, in the case of an unconscious worker the side effects continue unchecked and rescue is the only option. The time it takes for this condition to affect a person can vary greatly, so having an effective solution at hand for a speedy resolution is essential.

There are several approaches to rescue provision, 1st Response Rescue, Emergency Response Teams and the Emergency Services, each approach having it's own merits and disadvantages. The rescue equipment can also take many different forms all with different levels of risk, training requirements, aptitude and commitment. It is therefore important to identify the solution that is right for your application. In order to do this you must consider all the variables such as the equipment they are using, where they are using it and the capability of the users.

The Gotcha™ Rescue Range has been designed to provide simple, pre-assembled solutions for a variety of applications.

Another aspect of emergency planning that can be confused with Rescue is Evacuation.



Choosing the right rescue solution for your workers

1st Response Rescue

- + Available as an on-site rescue solution
- + Immediate response
- + Often application specific
- + Can be carried out safely by a fellow worker or supported by the Emergency Services
- Requires a commitment from fellow workers
- Workers require training and refresher opportunities for it to be effective

This is a great solution for short term tasks or for contractors who need to provide a self contained solution for work at height.

Emergency Response Teams

- + Available as an on-site rescue solution
- + Fast response
- + Should cover all issues on the specific site
- + Carried out safely by staff selected and trained for the purposes identified
- + Able to work alongside the Emergency Services
- Requires a commitment from the site to set up a team and maintain its currency
- Requires constant appraisal to ensure new work tasks can be covered

This can be an expensive option, however larger sites may prefer this option as the team are able to cover many different work areas or tasks.

Emergency Services

- + Equipped to cope with a wide range of situations
- + Professional personnel
- + Skills and knowledge regularly refreshed
- Should not be considered as a first response solution for work at height
- Availability cannot be controlled by the site
- Response times will vary depending upon external factors
- Site specific issues may only be possible with consultation

The Emergency Services provide an excellent service, but are only able to address issues that they are aware and trained to perform. This is an option that many workers rely upon without actually checking that the service is capable of meeting their expectations.

- 1 **Rescuer.** What is required:
- They must address their own safety first
 - They must be able to act calmly and effectively
 - They must have regular practice in the techniques for rescue
 - They should reassure the casualty

- 2 **Equipment.** What is required:
- It must recover the casualty to a point of safety with minimal risk to the casualty or rescuer
 - It must be simple to operate
 - It must be designed for the job it is being asked to perform

- 3 **Casualty.** What we know:
- They are suspended from an anchor point
 - They are wearing a full body harness
 - They are at risk from the effects of suspension
 - Whilst suspended it is virtually impossible to provide even basic first aid



01.4 RESCUE AND EVACUATION

- Rescue Solutions
- Gotcha™ Kit**
- Gotcha™ MP Rescue Kit
 - Gotcha™ Shark Kit
 - Gotcha™ Pole Top Rescue Kit
 - Gotcha™ 4000 Hauling Kit
 - Gotcha™ TRK Tower Rescue Kit
 - Red Pro Kit
 - Gotcha™ CRD



01.4 RESCUE AND EVACUATION

- Rescue Solutions
- Gotcha™ Kit**
- Gotcha™ MP Rescue Kit
 - Gotcha™ Shark Kit
 - Gotcha™ Pole Top Rescue Kit
 - Gotcha™ 4000 Hauling Kit
 - Gotcha™ TRK Tower Rescue Kit
 - Red Pro Kit
 - Gotcha™ CRD

Gotcha™ Kit

The Gotcha™ ORIGINAL was the first pre assembled remote rescue kit. Designed for rescuing a suspended casualty from Fall Arrest lanyards, Rope Safety Lines and Fall Arrest blocks, all possible from a point of safety.

Casualties can either be raised or lowered to the nearest point of safety, with casualties initially raised to release their original attachment preventing the need for cutting. The kit comes complete with an anchor sling capable of attaching to a wide range of structures and all terminations are sewn for security. The kit is adaptable for different heights of anchor point, colour coded for simplicity and includes an extension pole for remote attachment. Included is the Grabba for rapid rescue from Rope Safety Lines or Fall Arrest blocks.



Codes	Capacity in High Anchor Mode	Capacity in Low Anchor Mode	Weight of Kit
Gotcha-KIT-0 (50)	Up to 17m	Up to 13m	7kg
Gotcha-KIT-75	Up to 25m	Up to 19m	9kg
Gotcha-KIT-100	Up to 34m	Up to 26m	11kg
Gotcha-KIT-150	Up to 51m	Up to 39m	15kg
Gotcha-KIT-200	Up to 68m	Up to 52m	19kg

Gotcha™ Frog



- The Gotcha™ has enormous versatility and can be used**
- for rescue from towers
 - for rescue from ladders
 - as a hauling kit with a litter or stretcher
 - with an overhead anchorage
 - with a foot level anchorage
 - for rescue from a fall arrest lanyard
 - for rescue from a rope safety line

- Kit Contains**
- Upper and lower pulleys
 - Gotcha™ Frog
 - Attachment pole
 - Rope controller
 - Australian Standards rescue rope
 - Rope Grabba
 - Attachment slings
 - Karabiners
 - Back pack gear bag

Rope Grabba



Australian Standards Rescue Rope



01.4 RESCUE AND EVACUATION

- Rescue Solutions
- Gotcha™ Kit
- Gotcha™ MP Rescue Kit**
- Gotcha™ Shark Kit
- Gotcha™ Pole Top Rescue Kit
- Gotcha™ 4000 Hauling Kit
- Gotcha™ TRK Tower Rescue Kit
- Red Pro Kit
- Gotcha™ CRD



Gotcha™ MP Rescue Kit

A constant rate 100m multi purpose descent device suitable for rescue and evacuation with remote attachment frog and pole. For operators who require evacuation and Gotcha™ post fall rescue in one kit.

Suitable for Evacuation and Rescue from
High structures where constant rate lowering and minimal user input are required.

Suitable for Rescue from
Vertical situations where you can access the casualty with the Gotcha™ pole and frog.

- Kit Contains**
- Gotcha™ Frog
 - Attachment pole
 - Rope descent and rescue controller
 - Kernmantle rope
 - Attachment sling
 - Karabiners
 - Back pack gear bag

Codes	Height Capacity	Raise and Lower Capability	Weight of Kit
Gotcha CRD MP 50	50m	Yes	7kg
Gotcha CRD MP 75	75m	Yes	9kg
Gotcha CRD MP 100	100m	Yes	11kg
Gotcha CRD MP 150	150m	Yes	15kg
Gotcha CRD MP 200	200m	Yes	19kg

01.4 RESCUE AND EVACUATION

- Rescue Solutions
- Gotcha™ Kit
- Gotcha™ MP Rescue Kit
- Gotcha™ Shark Kit**
- Gotcha™ Pole Top Rescue Kit
- Gotcha™ 4000 Hauling Kit
- Gotcha™ TRK Tower Rescue Kit
- Red Pro Kit
- Gotcha™ CRD



Gotcha™ Shark Kit

The Gotcha™ SHARK kit is designed for industrial climbers. The kit comes complete with an anchor sling capable of attaching to a wide range of structures and all terminations are sewn for security. There is an integral rope protector that can be set at any required location and the descent device allows the user to control their own rate or stop as required. In use, the rescuer attaches to one attachment, descends to the casualty, attaches them to the second attachment and cuts the casualty free using the unique bladeless cutter.

The kit is designed for loads up to 300kg, so when used for two persons still retains excellent levels of control.

This kit is commonly used by those working on structures such as towers or pylons where safe egress at the base is guaranteed.

- Kit Contains**
- Gotcha™ rope rider descender
 - Rope sever wire cutter
 - 100m Australian Standards rescue rope
 - Attachment sling
 - Karabiners
 - Back pack gear bag

CODE: Gotcha-SHARK-0



01.4 RESCUE AND EVACUATION

- Rescue Solutions
- Gotcha™ Kit
- Gotcha™ MP Rescue Kit
- Gotcha™ Shark Kit
- Gotcha™ Pole Top Rescue Kit**
- Gotcha™ 4000 Hauling Kit
- Gotcha™ TRK Tower Rescue Kit
- Red Pro Kit
- Gotcha™ CRD



Gotcha™ Pole Top Rescue Kit

A kit for rescuing a casualty suspended by work position and fall arrest equipment when working on a pole.

Suitable for Rescue from
Pole Straps, Flexible Line Fall Arresters and Work Position Lanyards. The casualty is raised to release their original attachment, but the kit does include a safety knife in case of difficulty when raising the casualty.

Assisted Rescue
The rescuer accesses the casualty in order to recover them. The Gotcha™ Pole top rescue kit is suitable for use on poles up to 15m high.

Pre-assembled
No assembly is required by the user.

- Kit Contains**
- Rope belay controller
 - Australian Standards rescue rope
 - Attachment sling
 - Karabiners
 - Rescue knife
 - Gear bag

CODE: Gotcha-PTRC-0

01.4 RESCUE AND EVACUATION

- Rescue Solutions
- Gotcha™ Kit
- Gotcha™ MP Rescue Kit
- Gotcha™ Shark Kit
- Gotcha™ Pole Top Rescue Kit
- Gotcha™ 4000 Hauling Kit**
- Gotcha™ TRK Tower Rescue Kit
- Red Pro Kit
- Gotcha™ CRD



Gotcha™ 4000 Hauling Kit

This rescue/access pulley system with a 4:1 mechanical advantage features a single directional set of pulleys allowing efficient lifting and controlled lowering. Can be locked off for prolonged suspension, be self operated or by a second person.

Kit Contains

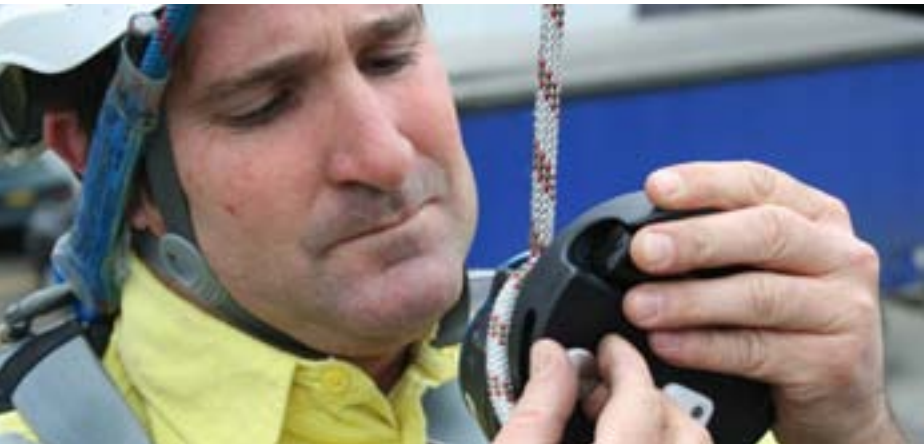
- 4000 Rescue pulley system
- 50m of Australian Standards rescue rope
- 2 x K1 Karabiners
- 2 x 2000 Round sling
- Lay flat gear organizer bag

CODE: 4000



01.4 RESCUE AND EVACUATION

- Rescue Solutions
- Gotcha™ Kit
- Gotcha™ MP Rescue Kit
- Gotcha™ Shark Kit
- Gotcha™ Pole Top Rescue Kit
- Gotcha™ 4000 Hauling Kit
- Gotcha™ TRK Tower Rescue Kit**
- Red Pro Kit
- Gotcha™ CRD



01.4 RESCUE AND EVACUATION

- Rescue Solutions
- Gotcha™ Kit
- Gotcha™ MP Rescue Kit
- Gotcha™ Shark Kit
- Gotcha™ Pole Top Rescue Kit
- Gotcha™ 4000 Hauling Kit
- Gotcha™ TRK Tower Rescue Kit
- Red Pro Kit**
- Gotcha™ CRD

Gotcha™ TRK Tower Rescue Kit

The Gotcha™ TRK is a pre-assembled 100m kit that can be used for rescuing personnel from towers, masts and similar structures. The kit includes enough components for a variety of rescue applications. This kit is commonly used by operators in the telecommunications and electrical industries.

- Kit Contains**
- 100m of Australian Standards rescue rope
 - Double brake descender
 - Micro hauler
 - 2 x Black snake attachment slings
 - 4 x K4 Karabiners
 - 3 x RP012 Single pulleys
 - Back pack lay flat gear bag

CODE: Gotcha-TRK-0



Red Pro Kit

The Red Pro is a pre-assembled 100m kit that can be used for personal evacuation, assisted evacuation or rescue of a casualty from high or remote locations. The kit comes complete with an anchor slings capable of attaching to a wide range of structures, all terminations are sewn for security, the descent device operates automatically at a constant speed requiring no input from the user and can also be used for raising a casualty if required. This kit is commonly used by wind energy access technicians and general operators looking for versatility in a kit. The unit comes in a sealed weatherproof bag and a sturdy SKV box.

- Kit Contains**
- Rope descent and rescue controller
 - 100m rope
 - 3 x Attachment slings
 - 4 x Karabiners
 - Edge protector
 - Pulley
 - Rope grab
 - Hard box

CODE: Gotcha REDPRO-0



01.4 RESCUE AND EVACUATION

- Rescue Solutions
- Gotcha™ Kit
- Gotcha™ MP Rescue Kit
- Gotcha™ Shark Kit
- Gotcha™ Pole Top Rescue Kit
- Gotcha™ 4000 Hauling Kit
- Gotcha™ TRK Tower Rescue Kit
- Red Pro Kit

Gotcha™ CRD



Gotcha™ CRD

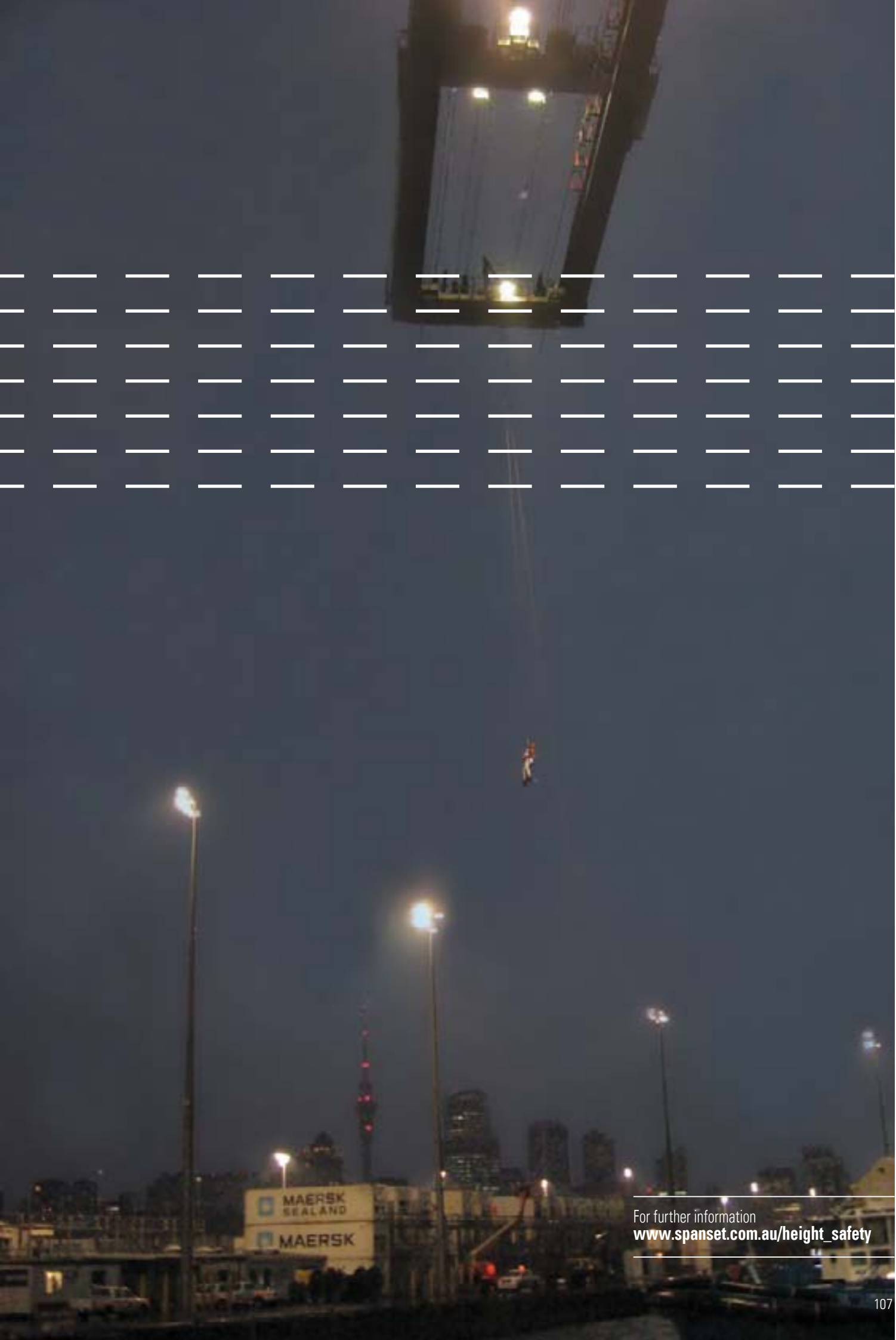
The Gotcha™ CRD is a pre-assembled 100m kit that can be used for personal evacuation, assisted evacuation of a casualty from high or remote locations.

The kit comes complete with an anchor sling capable of attaching to a wide range of structures, all terminations are sewn for security, and the descent device operates automatically at a constant speed requiring no input from the user. This kit is commonly used by less experienced workers who occasionally access high level working platforms and require a simple rescue or evacuation solution.

Kit Contains

- Rope Descent and RescueController
- 100m rope
- Attachment sling
- Karabiners
- Back pack gear bag

CODE: Gotcha-CRD-0



For further information
www.spanset.com.au/height_safety

01.5

Confined Space Solutions

Davit Systems	110
Tripods	120
Winches and 3 Way Recovery	122
Rescue Pulley System	123

Davit Systems

Tripods
Winches and 3 Way Recovery
Rescue Pulley System



Davit Systems

Tripods
Winches and 3 Way Recovery
Rescue Pulley System

Xtirpa Portable Manhole Guard System For Fall Protection and Retrieval

These portable manhole guards have an integrated mast, which in conjunction with the davit arm, transform these into confined space fall protection and retrieval systems. Ultra lightweight and portable with a rating in excess of 16kN, the assembly can be set up in less than 60 seconds.

Our Xtirpa manhole guard systems tick all the boxes of public safety, secondary fall protection, primary fall protection, rescue and retrieval, controlled ingress and egress, manual handling and worker acceptance. They are fully expandable with the extension pieces to suit any size application and are far more stable than a tripod.

Manhole Barrier Kit
with davit arm and stabilizer

CODE: XT3 XTIRPA



Portable Manhole Guard



Xtirpa Davit



Stabiliser



Manhole Guard Extension



Portable Manhole Guard

CODE: XTIN2108

Xtirpa Davit

CODE: XTIN2210

Stabiliser

CODE: XTIN2108-18

Manhole Guard Extension Piece

CODE: XTA2101-07

Davit Systems

Tripods
Winches and 3 Way Recovery
Rescue Pulley System



Davit Systems

Tripods
Winches and 3 Way Recovery
Rescue Pulley System

Xtirpa Tow Bar Hitch Davit System
For Fall Protection and Retrieval
Versatility

The trailer hitch mount system connects to most 50mm square vehicle receiver hitches. This most popular system offers you adjustable screw pads for simple leveling of the system and is far more stable than a tripod.

Again SpanSet is offering you the most versatile system on the market, always using same mast (IN-2003) and same davit arm (IN-2210). It gives you a maximum rating of 16kN and features a range of accessories to complete this valuable workplace asset.

Xtirpa Tow bar hitch mount system kit
(complete with mast and davit arm)
CODE: XT6

Trailer hitch mount
CODE: XTIN2204

Xtirpa Davit Arm 16kN
CODE: XTIN2210

Mast for 2210
CODE: XTIN2003



Anchor bolt adapter



90 Degree Extension



Straight Extension



Universal Joint



Xtirpa Tow Bar Hitch Davit System
Accessories

Anchor bolt adapter for trailer hitch mount
CODE: XTA2126-21

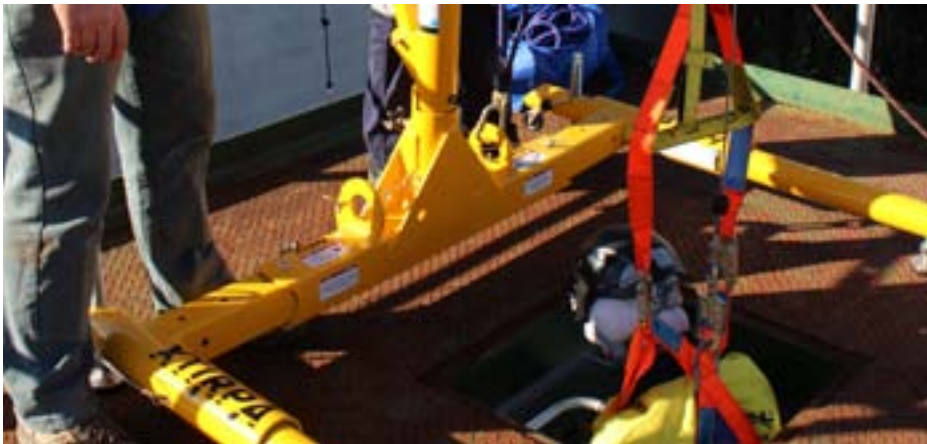
90° extension for trailer hitch mount
CODE: XTIN2126-10

Straight extension for trailer hitch mount
CODE: XT2126-09

Universal swivel joint for trailer hitch mount
CODE: XT2126-07

Davit Systems

Tripods
Winches and 3 Way Recovery
Rescue Pulley System



Davit Systems

Tripods
Winches and 3 Way Recovery
Rescue Pulley System

“H” Base Portable Davit System

The 5 piece Hoist system is designed to be used in conjunction with davit arm IN-2210 and mast IN-2003. The portable lower base will adjust to fit most standard confined spaces. It offers a solution for the entry, rescue and positioning of personnel.

The davit arm/mast combination will allow the attendant to pivot the system for easier and safer rescue and offers far more stability than a tripod. Durable and versatile, the system has a capacity of 16kN and it also provides you a 22kN anchor point for standby personnel.

Xtirpa “H” Base Portable Davit System Kit
CODE: XT5—(Complete with mast and davit arm)

H Base

CODE: XTIN2118

50” Xtirpa Davit Arm 16kN

CODE: XTIN2210

Mast for 2210

CODE: XTIN2003



Brand and Model	Part No
SpanSet FPRB15	FPRBB Bracket
SpanSet IKHRA-30	IKHRAB Bracket
SpanSet FPMS-20	—
SpanSet FPMS-30	—
Protecta SRL AD515CG	XTIN2152 Adapter
Miller SRL MR-100G, MR130SB	XTIN2177 Adapter
Miller SRL M52/25	XTIN2225 Adapter
Miller SRL LB287	XTIN2226 Adapter
Miller Man Handler Winch	XTIN2191 Adapter
Ikar SRL 205G-50	XTIN2079 Adapter
Ikar SRL 205G-75	XTIN2178 Adapter
Ikar SRL 205G-100	XTIN2231 Adapter
Sala SRL and Winch	—
MSA Winch 10011744,50	XTIN2151 Adapter
North FP6610/33 (purchased prior to 2012)	XTIN2215 Adapter
North FP6610/15 (purchased prior to 2012)	XTIN2191 Adapter

SRL and Winch Bracket adapters

For those customers who own existing competitors’ winches and SRLs we have adapter brackets available to fit the Xtirpa range of davits and our tripods.

Note: All SRL and Winch brackets supplied by SpanSet are compatible with the Xtirpa range without the need for adapters.



Davit Systems

Tripods
Winches and 3 Way Recovery
Rescue Pulley System



Davit Systems

Tripods
Winches and 3 Way Recovery
Rescue Pulley System

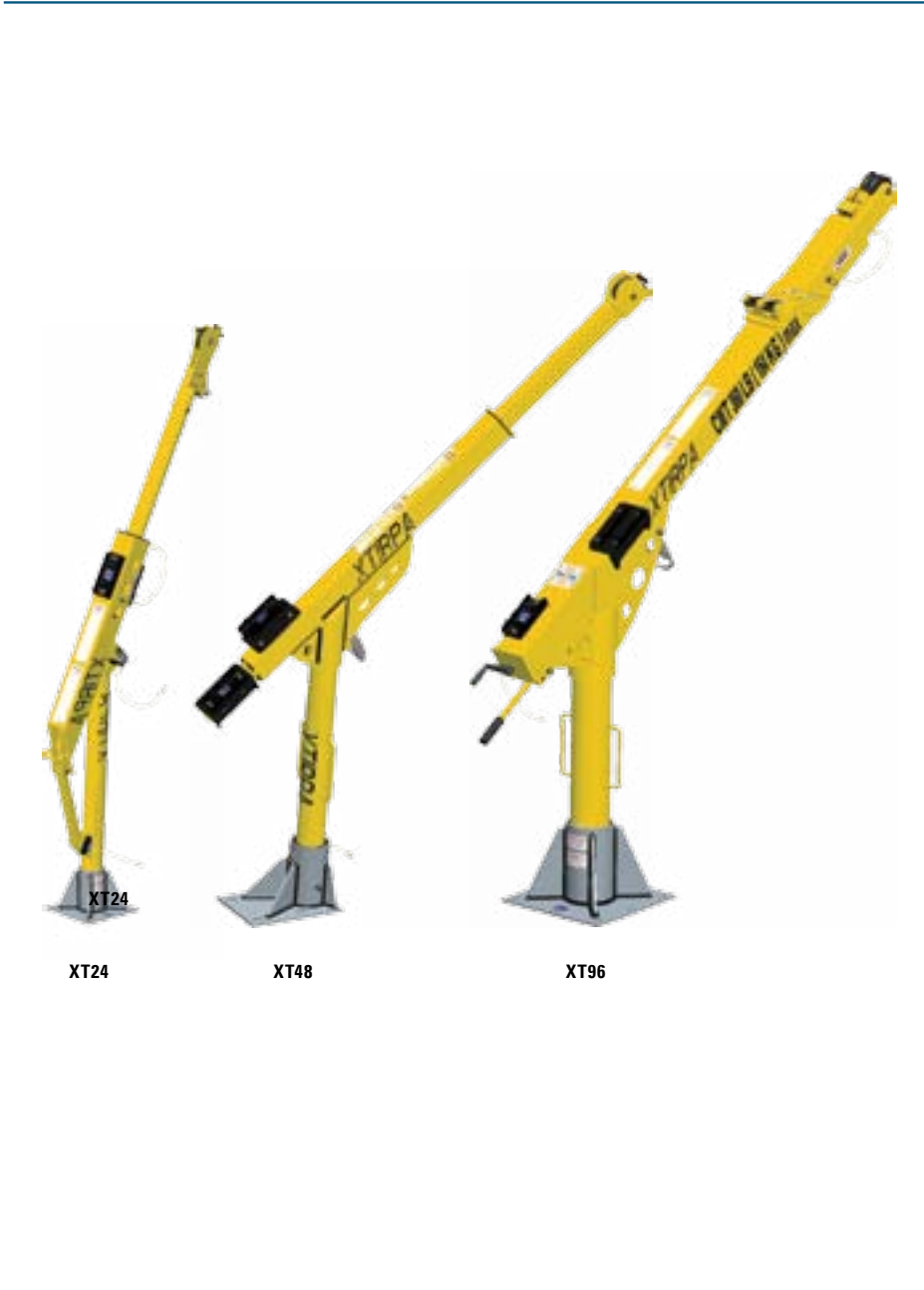
Fixed and Semi-Permanent Davits

The fall protection and retrieval Davit Arm with secondary block attachment will facilitate your access to underground chambers and any other confined space.

Light, reliable and easy to install. Used in conjunction with a portable manhole guard for fall protection or utilize the 22kN fixed anchor point for standby personnel protection.

This is a semi permanent configuration with the mast adapters permanently fixed to a structure and the davit mast and arm moved around as desired.

3 models fill out the range, 600mm, 1200mm, and the Jumbo 2400mm and all are fully rated to 16kN at full extension.



Code	Description	Min Reach	Max Reach	Max Height
XT24	600mm Davit, Mast and Base kit	385mm	601mm	2992mm
XTIN2210	600mm Davit Arm	—	—	—
XTIN2003	Standard Mast	—	—	—
XTIN2044	380mm Mast Extension	—	—	3372mm
XTIN2109	450mm Mast Extension	—	—	3442mm
XTIN2045	600mm Mast Extension	—	—	3592mm
XT48	1200mm Davit, Mast and Base Kit	774mm	1208mm	2224mm
XTIN2237	1200mm Davit Arm	—	—	—
XTIN2240	Mast	—	—	—
XTIN2238	Stainless Steel Floor Adapter	—	—	—
XT96	2400mm Davit, Mast and Base Kit	1526mm	2428mm	2786mm
XTIN2197	2400mm Davit Arm	—	—	—
XTIN2199	Mast	—	—	—
XYIN2201	Stainless Steel Floor Adapter	—	—	—

Fixed and Semi-Permanent Davits

Davit Systems

- Tripods
- Winches and 3 Way Recovery
- Rescue Pulley System



Davit Systems

- Tripods
- Winches and 3 Way Recovery
- Rescue Pulley System

Fixed Davit Mast Adapters

Stainless steel floor mount adapter
for 600mm davit
CODE: XTIN2005

Stainless steel floor mount adapter
for 1200mm davit
CODE: XTIN2238

Stainless steel floor mount adapter
for 2400mm davit
CODE: XTIN2238

Sleeve adapter for 600mm davit
CODE: XTIN2097

Wall adapter for 600mm davit
CODE: XTIN2013

Flush Floor adapter for 600mm davit
CODE: XTIN2006

Barrel adapter for 600mm davit
CODE: XTIN2021

Beam adapter for 600mm davit
CODE: XTIN2085

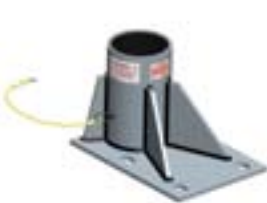
Adapter Cap
CODE: XTIN2072

Note: Other specialized adapters
available on request

XTIN2005



XTIN2238



XTIN2238



XTIN2097



XTIN2013



XTIN2006



XTIN2021



XTIN2085



XTIN2072



Manhole Cover Lifter



Manhole Collar



Manhole Cover Lifter

This unique concept was designed for easy handling of manhole covers. Light and durable, this model will offer an ERGOmic and safe way of lifting the toughest lids without strain. The non skid foot plate, auto rewind ratchet mechanism and 1335mm of leverage combine to minimize the potential for manual handling injuries.

CODE: XTIN2071

Manhole Collar

A smart and quick solution for fixed diameter manhole access and provision of rescue egress capability. Lightweight aluminium construction makes handling easy and the unit is also available in other sizes.

CODE: XTIN2217 (dia605-655mm)

01.5 CONFINED SPACE SOLUTIONS

Davit Systems
Tripods
Winches and 3 Way Recovery
Rescue Pulley System



Heavy Duty Tripod

This aluminium tripod has been designed for tough work conditions and long term use and is particularly suitable for the hire industry. Rectangular, fully adjustable legs and a one piece cast head are designed to resist damage. Integrated twin pulleys and an additional auxiliary anchorage point allow many options and combinations of access, egress and rescue equipment to be specified. Standard extended height is 2.7m.

CODE: TRIPOD-HD



01.5 CONFINED SPACE SOLUTIONS

Davit Systems
Tripods
Winches and 3 Way Recovery
Rescue Pulley System



Spectre Tripod

A lightweight tripod offering compliance and ease of use. The legs are fully adjustable with a single pulley located in the head and an auxiliary anchor point supplied. Available in 2.1m (7ft) and 3.0m (10ft) extended heights

CODE: TRIPOD – SPECTRE – 7(FT)
CODE: TRIPOD – SPECTRE – 10(FT)



Davit Systems
Tripods
Winches and 3 Way Recovery
Rescue Pulley System



Davit Systems
Tripods
Winches and 3 Way Recovery
Rescue Pulley System

SpanSet Personnel Winches

These robust personnel winches are perfectly suited to the demanding requirements of the confined space environment. Tough, steel construction, combined with sensible features, allow operators to get on with the task at hand in total confidence. Attention to detail, such as wire guide rollers and a spring loaded spool retention bar add to the workhorse nature of these winches.

FPMS-20G



Code	Description	Weight	Cable Material	Max/Min work load	Mechanical Advantage
FPMS-20G	20m personnel winch	14kg	Galvanised Steel	150kg/12kg	22:1
FPMS-30G	30m personnel winch	15.5kg	Galvanised Steel	150kg/12kg	22:1

FPRB-15



IKHRA30



Code	Description	Weight	Lifeline material	Max Load
FPRB-15	15m 3 way SRL	8.9kg	Galvanised Steel	150kg
IKHRA-30	30m 3 way SRL	21kg	Galvanised Steel	136kg

SpanSet 3 Way Self Retracting Lifelines

These self retracting lifelines offer fall protection when entering or exiting confined spaces, and have the additional feature of an easy to deploy emergency winch function. Both have aluminium casings, giving a robust yet lightweight performance. Swivel fall indicator hooks are standard on all SpanSet 3 way devices.

01.5 CONFINED SPACE SOLUTIONS

Davit Systems
Tripods
Winches and 3 Way Recovery
Rescue Pulley System



4000 Entry and Egress Pulley System

Our pulley system with a 4:1 mechanical advantage is simple to use and features one way pulleys ie: free wheeling to assist the hauling effort when raising, and locked, adding friction and resistance when lowering. Safety is further enhanced with a locking, spring loaded, toothed cam. It can be self operated or by a second person. The kit comes complete with a fold out rescue organizer bag, anchor sling karabiners and an ascender/rope grab for even greater ergonomics.

CODE: 4000



Confined Space Typical Setups

Anchorage

Usually a tripod or davit system, but can include overhead beams or anchors. Choice of anchorage system depends on the application and physical obstacles associated. Generally tripods are for flat stable applications while Davits can be tailored towards more difficult entries.

Spreader Bar

Spreader bars are generally used in tighter manhole entries where the operator needs to be lifted from the shoulders to allow an upright orientation and an easier fit through the hole. They can also be used with bosuns chairs for extended suspension.

Lifelines

The choice of lifeline can depend on the environment into which the operator is entering. Where there is ladder access, a 3 way Self Retracting Lifeline will protect the worker from falls, as well as having an emergency recovery function. Where there is no ladder access a personnel winch is required and best practice is to have a 3 way SRL as a back-up device. Rope based pulleys are acceptable depending on the residual chemical presence.

Harness

Consideration should be given to the function of the confined space entrant and the type of harness used. Standard ERGO harnesses are fine for most infrequent applications, while the fully padded ERGOplus range is better for longer suspended descents. Corrosive environments need to use our WaterWorks range with stainless steel fittings and welding/grinding applications need our HotWorks range of heat resistant harnesses. Almost all of our harnesses come standard with confined space attachment shoulder loops.



For further information
www.spanset.com.au/height_safety



01.6

Anchorage

Beam Anchors	128
Safety Lines	129
Hard Point Anchors	132
Attachment Slings	133

01.6 ANCHORAGES

Beam Anchors

- Safety Lines
- Hard Point Anchors
- Attachment Slings



SpanSet Beam Anchors

These robust vertical and horizontal beam anchors offer secure attachment to a range of I beam and H beam construction steel profiles.

The SpanSet Horizontal Beam Anchor has a spring loaded twist lock adjustment system which eliminates any accidental activation of the adjuster mechanism, a vulnerability that many beam anchors present.

The vertical beam anchor is ideal for the attachment of static lines and temporary systems. It has a simple pin adjustment method supported by an additional fine incremental screw tensioner. The SpanSet Vertical Beam Anchor can be conveniently installed without tools.

BA 002



BA 005



Code	Type	Maximum Flange Width	Minimum Flange Width	Maximum Flange Thickness	Adjustment Type	Rating
BA002	Horizontal	400mm	100mm	28mm	Twist Lock	22kN
BA005	Vertical	350mm	100mm	31mm	Pin/Screw	22kN

01.6 ANCHORAGES

Beam Anchors

- Safety Lines**
- Hard Point Anchors
- Attachment Slings



SpanSet Horizontal Safety Lines

These webbing safety lines give lateral and versatile continuous anchorage connections. The standard 3400 connection is made directly to the webbing line via a large hook or karabiner while the 3400UK features connection D rings.

3400



3400UK



Code	Length	Rating	Ratchet	Tension Force Indicator
3400	18m	1 Man	Standard	No
3400UK	18m	2 Man	20020 ABS	Yes

01.6 ANCHORAGES

Beam Anchors
Safety Lines
Hard Point Anchors
Attachment Slings



Anchorage Lines

Supplied with mobile anchorage devices allowing adjustability and movement in Horizontal and Vertical planes.

3108SA



3109



Code	Attached Shock Absorber	Length	Orientation of use	Rating	Adjuster	Rope Diameter	Rope Type
3108 x 15	No	15m	Horizontal	Fall Arrest	RF1 Type 1	11mm	Kernmantle
3108 x 20	No	20m	Horizontal	Fall Arrest	RF1 Type 1	11mm	Kernmantle
3108 x 25	No	25m	Horizontal	Fall Arrest	RF1 Type 1	11mm	Kernmantle
3108 x 30	No	30m	Horizontal	Fall Arrest	RF1 Type 1	11mm	Kernmantle
3108SA x 15	Yes	15m	Horizontal	Fall Arrest	RF1 Type 1	11mm	Kernmantle
3108SA x 20	Yes	20m	Horizontal	Fall Arrest	RF1 Type 1	11mm	Kernmantle
3108SA x 25	Yes	25m	Horizontal	Fall Arrest	RF1 Type 1	11mm	Kernmantle
3108SA x 30	Yes	30m	Horizontal	Fall Arrest	RF1 Type 1	11mm	Kernmantle
3109SA x 15	No	15m	Vertical	Fall Arrest	FP561 Type 1	16mm	3 Strand

01.6 ANCHORAGES

Beam Anchors
Safety Lines
Hard Point Anchors
Attachment Slings



Rope Grabs

RF1



FP561



FP571/8



Code	Type	Orientation of Use	Type of Rope Suitable for Use	Rope Diameter
RF1	Type 1 Manual	Horizontal	Nylon Kernmantle	11mm
FP561	Type 1 Automatic	Vertical	Nylon 3 strand	16mm
FP571/8	Type 1 Automatic	Vertical	Wire Rope	8mm
FP571/10	Type 1 Automatic	Vertical	Wire Rope	10mm

01.6 ANCHORAGES

- Beam Anchors
- Safety Lines
- Hard Point Anchors
- Attachment Slings



Hard Point Anchors

Code	Type	MBS Rating
CT01	Temporary Concrete	22kN
CT02	Temporary Concrete	44kN
CT04	Permanent Steel/Concrete	44kN
RA1	Retro Fit Purlin	22kN
SM1P	Steel Sheet	22kN
TA 1	Timber Rafter	22kN

CT01



CT04



RA1



SM1P



TA1



01.6 ANCHORAGES

- Beam Anchors
- Safety Lines
- Hard Point Anchors
- Attachment Slings



Black Snake



3501



3502



The SpanSet “Black Snake” attachment sling utilizes our round sling technology and packages it into a low profile super strength attachment strop, with the feel of an endless piece of rope. An outer sheath protects the inner load bearing core and the low profile means no more crowding of snap hooks and karabiners, even in basket configuration.

Code	Type	Orientation of use	MBS Rating	Wear protection	Connection	Length
Black Snake x 0.6	Compact Round Sling	Direct, Choke or Basket	70kN (direct)	Yes	Direct	0.6m
Black Snake x 1.0	Compact Round Sling	Direct, Choke or Basket	70kN (direct)	Yes	Direct	1.0m
Black Snake x 1.5	Compact Round Sling	Direct, Choke or Basket	70kN (direct)	Yes	Direct	1.5m
3501	Webbing	Choke or Basket	22kN (choke)	Yes	to D ring	1.3m
3502	Webbing		22kN	No	Direct	1.2m

For further information
www.spanset.com.au/height_safety

01.7

Accessories and Kits

Rescue Accessories	136
General Accessories	141
Connectors	142
Safety Kits	144
Other Products	146

01.7 ACCESSORIES AND KITS

Rescue Accessories

- General Accessories
- Connectors
- Safety Kits
- Other Products



01.7 ACCESSORIES AND KITS

Rescue Accessories

- General Accessories
- Connectors
- Safety Kits
- Other Products

Rescue Accessories

Vertical Rescue Stretcher

Code: VRS

Micro Hauler Pulley System

Code: Micro

Single Yoke

Code: Single Yoke

Dual Yoke

Code: Dual Yoke

VRS



Micro



Single Yoke



Dual Yoke



RF20



RFRBW



ASAP



ID20



RF5-L



RF5-R



Rescue Accessories

SpanSet Descender

Code: RF20

SpanSet Rocker Backup Device

Code: RFRBW

ASAP

Code: ASAP

Descender

Code: ID20

Left Hand Ascender

Code: RF5-L

Right Hand Ascender

Code: RF5-R

Rescue Accessories

- General Accessories
- Connectors
- Safety Kits
- Other Products



Rescue Accessories

- General Accessories
- Connectors
- Safety Kits
- Other Products

Rescue Accessories

Small pulley

Code: RP012

Small double pulley

Code: RP030

Single pulley with becket

Code: RP065

Large double pulley with becket

Code: RP067

Rope grab with removable pin and cam

Code: RP209

RP012



RP030



RP320



RP310



RP300



Rescue Accessories

Large Rigging Plate

Code: RP320

Medium Rigging Plate

Code: RP310

Small Rigging Plate

Code: RP300

Rescue Rope 11mm

Code: RC11 AS

Rescue Scissors

Code: CCRS

RP065



RP067



RP209



RC11



CCRS



01.7 ACCESSORIES AND KITS

- Rescue Accessories
- General Accessories**
- Connectors
- Safety Kits
- Other Products

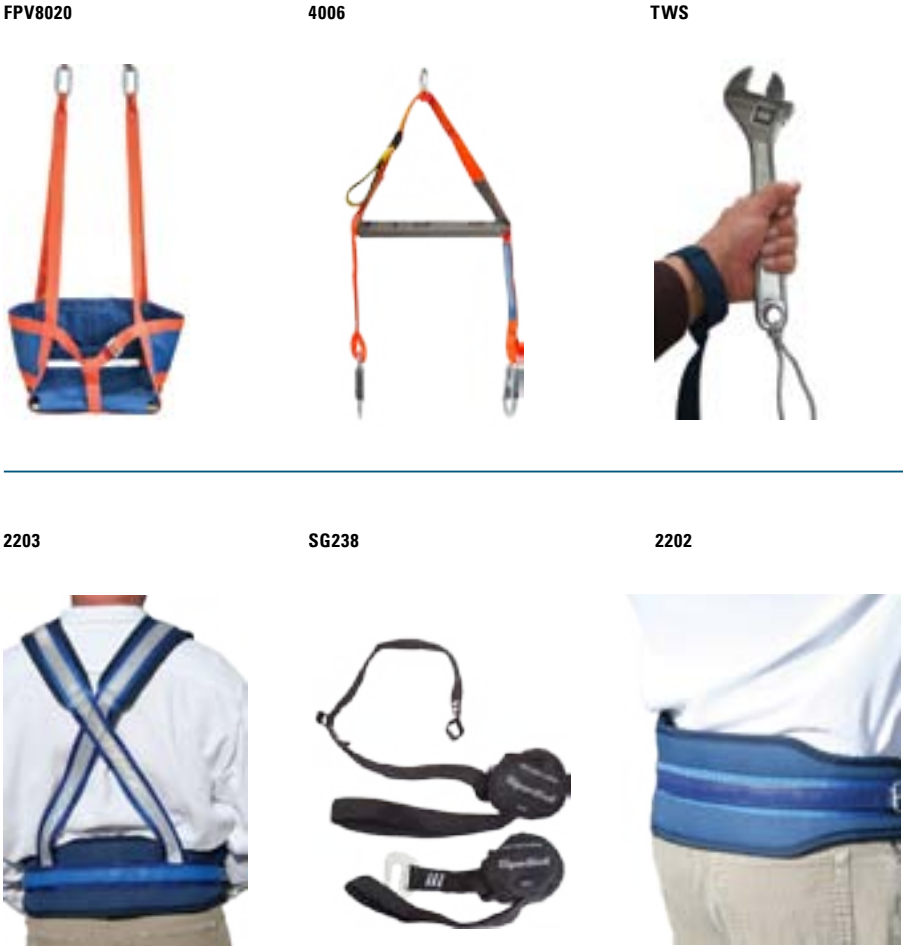


01.7 ACCESSORIES AND KITS

- Rescue Accessories
- General Accessories**
- Connectors
- Safety Kits
- Other Products

Rescue Accessories

- Bosuns Chair**
Code: FPV8020
- Spreader Bar**
Code: 4006
- Tool Strap**
Code: TWS
- Miners Belt c/w Shoulder Straps**
Code: 2203
- Suspension Strap**
Code: SG238
- Miners Belt**
Code: 2202



Rescue Accessories

- Small Rope Bag**
Code: B Bag
- Kit Bag**
Code: K Bag
- Pulley Bag**
Code: P Bag
- Rope Bag**
Code: R Bag
- Large Gear Bag**
Code: ERGO-L

01.7 ACCESSORIES AND KITS

Rescue Accessories
General Accessories
Connectors
Safety Kits
Other Products



K1	K2	K4	K4Alu
K6	K10	K10Alu	H3L
H3	H3HD	H3BF	RF17
K9	H3Alu	DELTA	

01.7 ACCESSORIES AND KITS

Rescue Accessories
General Accessories
Connectors
Safety Kits
Other Products



Code	Description	Gate Type	Gate opening	Strength	Gate strength	Weight	Material
K1	D Karabiner	Screw Gate	27mm	50kN	1kN	190g	Alloy Steel
K2	Oval Karabiner	Screw Gate	15mm	25kN	1kN	157g	Alloy Steel
K4	Equal D Karabiner	Triple Action	24mm	30kN	1kN	183g	Alloy Steel
K6	D Karabiner	Screw Gate	26mm	22kN	1kN	85g	Aluminium
K9	Scaffold Karabiner	Triple Action	52mm	25kN	1kN	634g	Alloy Steel
K10	Forged Eye Karabiner	Triple Action	20mm	50kN	1kN	257g	Alloy Steel
H3	Safety Scaffold Hook	Double Action	51mm	25kN	1kN	415g	Alloy Steel
H3HD	Safety Scaffold Hook	Double Action	60mm	25kN	16kN	780g	Alloy Steel
H3L	Safety Scaffold Hook	Double Action	64mm	25kN	1kN	603g	Alloy Steel
RF17	Wire Anchor Clamp	Double Action	127mm	23kN	1kN	366g	Stainless Steel
DELTA 8	Delta Quick Link	Screw Gate	14mm	40kN	1kN	86g	Carbon Steel
DELTA 10	Delta Quick Link	Screw Gate	16mm	60kN	1kN	152g	Carbon Steel
H1	Safety Hook	Double Action	21mm	25kN	1kN	280g	Carbon Steel
H1HD	Safety Hook	Double Action	21mm	45kN	16kN	369g	Carbon Steel
H1Alu	Safety Hook	Double Action	23mm	25kN	1kN	200g	Aluminium
H3Alu	Safety Scaffold Hook	Double Action	60mm	25kN	1kN	459g	Aluminium
H3Alu HD	Safety Scaffold Hook	Double Action	60mm	25kN	16kN	525g	Aluminium
H3 BF	Safety Jumbo Scaffold Hook	Double Action	110mm	25kN	1kN	915g	Aluminium
H3 WBF	Safety Wire Scaffold Hook	Double Action	86mm	20kN	1kN	488g	Aluminium
K10Alu	Fixed Eye Karabiner	Triple Action	20mm	25kN	1kN	120g	Aluminium

01.7 ACCESSORIES AND KITS

- Rescue Accessories
- General Accessories
- Connectors
- Safety Kits**
- Other Products



01.7 ACCESSORIES AND KITS

- Rescue Accessories
- General Accessories
- Connectors
- Safety Kits**
- Other Products

Safety Kits

Riggers Kit
Containing 1 x 3400 safety line,
2 x 3.25T safety shackles, 1 x 1100 safety
harness, 1 x 3055 lanyard with Scaffold Hook,
2 x E2000 round slings, kit bag

Code: 6000



Roofers Kit
Containing 1 x 3108 fall arrest
anchorage line and adjuster, 1 x 1104 harness,
1 x K2 karabiner, 1 x 3053 lanyard,
1 x 3501 anchor sling, kit bag

Code: 6001



Roofers Kit
Containing 1 x 3108 fall arrest anchorage
line and adjuster, 1 x 1104 harness,
1 x K2 karabiner, 1 x 3051 shock absorber,
1 x 3501 anchor sling, kit bag

Code: 6001SA



Safety Kits

Basic Kit
Containing 1 x 1100 harness, 1 x 3053 lanyard,
1 x 3501 anchor sling, kit bag

Code: 6002



Order Picker Kit
Containing 1 x 1100 harness
1 x 3201 retracting lanyard with ntriple
action karabiners, kit bag

Code: 6002OP



All Purpose Kit
Containing 1 x 1104 harness, 1 x 3055 lanyard
with Scaffold Hook, 1 x 3051 shock absorber,
1 x 3501 anchor sling, 1 x 3108 rope restraint
line and adjuster, kit bag

Code: 6008



More from SpanSet

ABS Ratchet Systems

Supra Plus Round Slings

Secutex Edge Protection

Engineered Lifting Components

High Capacity Round Slings—to 100t

High Capacity Flat Slings—to 20t

ABS Ratchet Systems



Supra Plus Round Slings



Secutex Edge Protection



Engineered Lifting Components

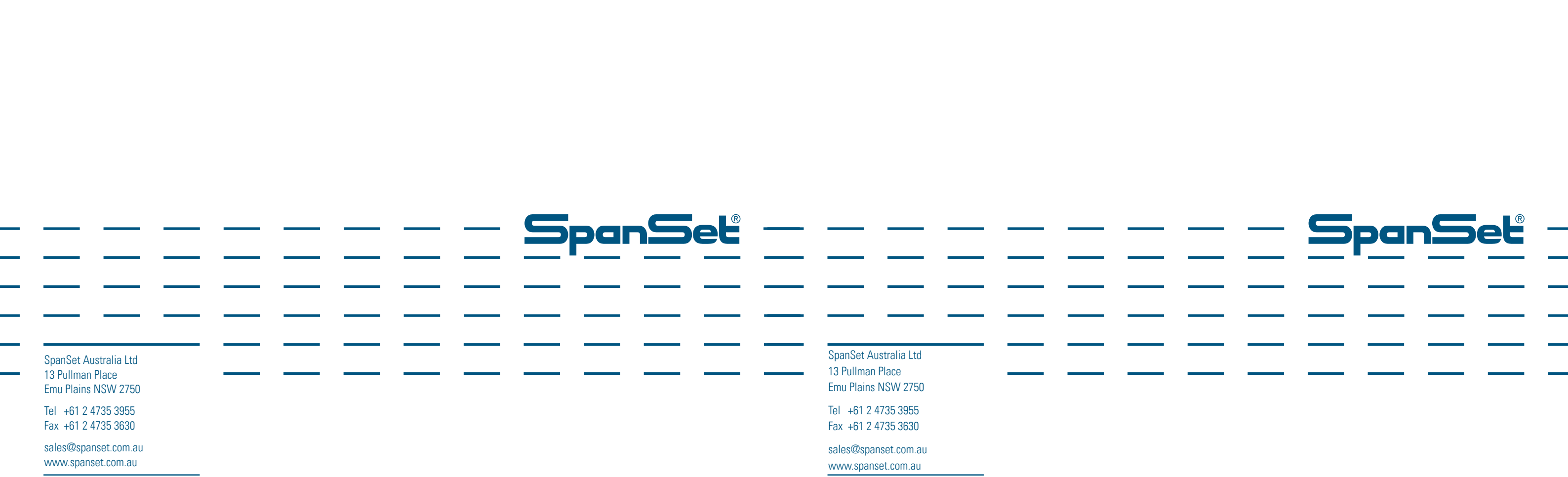


High Capacity Round Slings



High Capacity Flat Slings





SpanSet Australia Ltd
13 Pullman Place
Emu Plains NSW 2750

Tel +61 2 4735 3955
Fax +61 2 4735 3630

sales@spanset.com.au
www.spanset.com.au

SpanSet Australia Ltd
13 Pullman Place
Emu Plains NSW 2750

Tel +61 2 4735 3955
Fax +61 2 4735 3630

sales@spanset.com.au
www.spanset.com.au

DISTRIBUTION: Bullivants Branch Details

New South Wales

Sydney
10–14 Kellogg Road
Glendenning NSW 2761
Ph: (02) 9208 3600
Fx: (02) 9625 3355

Muswellbrook
12 Carramere Road
Muswellbrook NSW 2333
Ph: (02) 6542 6300
Fx: (02) 6542 5799

Newcastle
32 Parker Street
Carrington NSW 2294
Ph: (02) 4969 4755
Fx: (02) 4962 1468

Wollongong
5 Investigator Drive
Unanderra NSW 2526
Ph: (02) 4272 1455
Fx: (02) 4272 1430

Queensland

Brisbane
81 Colebard Street West
Acacia Ridge QLD 4110
Ph: (07) 3277 9855
Fx: (07) 3277 2182

Cairns
86-88 Aumuller Street
Cairns QLD 4870
Ph: (07) 4035 4777
Fx: (07) 4035 4784

Emerald
Cnr Cameron and Munro Rds
Emerald QLD 4720
Ph: (07) 4980 0900
Fx: (07) 4987 5627

Gladstone
116 Hanson Road
Gladstone QLD 4680
Ph: (07) 4972 9449
Fx: (07) 4972 7881

Mackay
10 Michelmore Street
Paget QLD 4740
Ph: (07) 4952 2977
Fx: (07) 4952 2792

Queensland

Mt Isa
1/16 Enterprise Road
Mount Isa QLD 4825
Ph: (07) 4743 2849
Fx: (07) 4743 2876

Toowoomba
Unit 4/311 Taylor Street
Toowoomba QLD 4350
Ph: (07) 4634 9155
Fx: (07) 4634 2977

Townsville
2 Leyland Street
Garbutt QLD 4814
Ph: (07) 4775 2700
Fx: (07) 4775 2668

South Australia

Adelaide
1/334 Cormack Road
Wingfield SA 5013
Ph: (08) 8260 4711
Fx: (08) 8260 5610

Roxby Downs
10 Callanna Road
Roxby Downs SA 5725
Ph: (08) 8671 3255
Fx: (08) 8671 3288

Tasmania

Launceston
108 Forster Street
Launceston TAS 7250
Ph: (03) 6331 2077
Fx: (03) 6331 9822

Victoria

Melbourne
114–116 Boundary Road
Braeside VIC 3195
Ph: (03) 9585 1288
Fx: (03) 9585 8948

Geelong
157 Weddell Road
North Geelong VIC 3215
Ph: (03) 5277 3255
Fx: (03) 5277 3299

Northern Territory

Darwin
2 Cato Street
Winnellie NT 0820
Ph: (08) 8984 3299
Fx: (08) 8984 4946

Western Australia

Perth
2–10 Kewdale Road
Welshpool WA 6106
Ph: (08) 9451 8133
Fx: (08) 9351 8073

Bunbury
5 Halifax Drive
Bunbury WA 6230
Ph: (08) 9725 6380
Fx: (08) 9725 6371

Henderson
16 Egmont Road
Henderson WA 6166
Ph: (08) 9437 1566
Fx: (08) 9437 1599

Kalgoorlie
Cnr Lane St and Hay Street
Kalgoorlie WA 6430
Ph: (08) 9091 1411
Fx: (08) 9091 1384

Karratha
Lot 120 Mooligunn Road
Karratha WA 6714
Ph: (08) 9144 4577
Fx: (08) 9144 4566

Port Hedland
4 Manganese Street
Wedgefield WA 6721
Ph: (08) 9160 2500
Fx: (08) 9172 3635